

Davidson Galleries

Sister Mary Cortia Kent

Contact

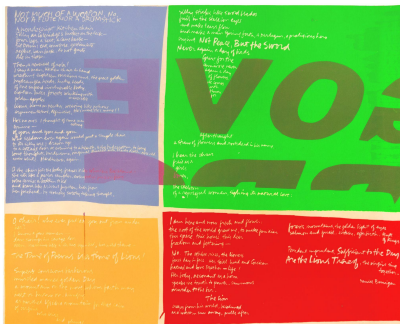
(206) 624-7684

rebecca@davidson galleries.com

313 Occidental Ave S

Seattle, WA 98104

View all works at davidson galleries.com



not much of a weapon

Serigraph. 1966.

Edition of 100 (Rare). Signed.

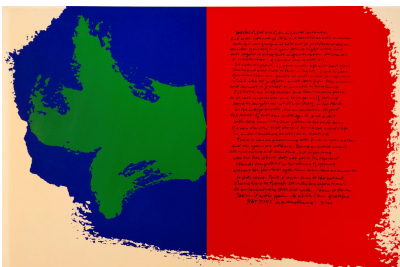
Reference: Corita Art Center 66-13.

30 x 35 3/4 inches (image), 30 x 36 inches (sheet)

Backed. Lightly soiled. Soft creases, some in spots.

[53901c]

\$3,800 unframed



works of art are an infinite loneliness

Serigraph. 1973.

Edition of 207. Signed.

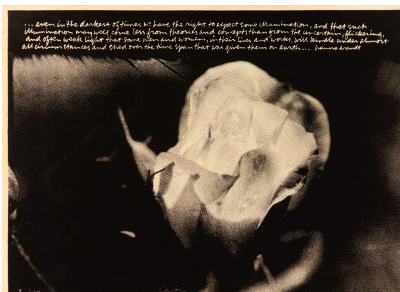
Reference: Corita Art Center 73-09.

22 1/8 x 33 3/8 inches (image), 22 1/4 x 34 1/4 inches (sheet)

Toned. Partially attached to backing sheet.

[53899c]

\$2,600 unframed



men will kindle light (...even in the darkest of times...)

Serigraph. 1972.

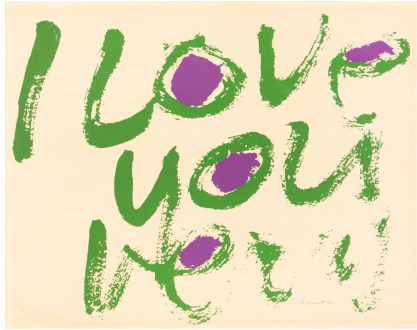
Edition of 260. Signed.

11 1/2 x 16 inches (image), 12 x 16 5/8 inches (sheet)

A few scuff marks lower left.

[53902c]

\$1,250 unframed



i love you very

Serigraph. 1971.

Edition of 200. Signed.

7 1/2 x 9 1/2 inches (image), 8 x 10 inches (sheet)

Toned.

[53878c]

\$1,100 unframed



a i love that one (The circus...)

From Circus Alphabet

Serigraph. 1968.

Signed.

Reference: Corita Art Center 68-31.

15 x 15 1/8 inches (image), 16 x 16 1/8 inches (sheet)

[53897c]

\$2,500 unframed



n willing to be vulnerable (Those who are willing to be vulnerable...)

From Circus Alphabet

Serigraph. 1968.

Signed.

Reference: Corita Art Center 68-44.

22 1/2 x 22 1/2 inches (image), 23 x 23 1/8 inches (sheet)

[53896c]

\$2,850 unframed



let your mind be quiet (Let your mind be quiet, realizing the beauty of the world...)

Serigraph. 1972.

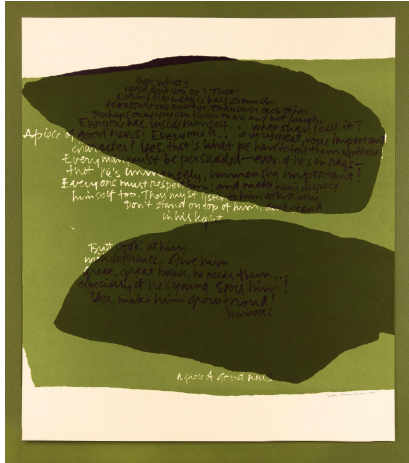
Edition of 200. Signed.

Reference: Corita Art Center 72-11.

22 1/2 x 22 inches (image), 22 7/8 x 22 3/4 inches (sheet)

[53888c]

\$2,400 unframed



a piece of good news #1 #2

Serigraph. 1963.

Edition of 60. Signed in ink.

Reference: Corita Art Center 63-04.

15 3/8 x 17 inches (image), 19 x 17 inches (sheet)

[53890c]

\$1,200 unframed



bicentennial #2

Serigraph. 1976.

Edition of 75. Signed, titled, and editioned in pencil.

Reference: Corita Art Center 76-03.

9 1/2 x 11 1/8 inches (image), 10 x 11 7/8 inches (sheet)

[53879c]

\$2,000 matted



the eye in the sun (Something unbearable makes it possible to break thru a ceiling)

Serigraph. 1972.

Edition of 200. Signed.

Reference: Corita Art Center 72-06.

22 1/2 x 20 1/4 inches (image), 23 x 23 inches (sheet)

Toned.

[53883c]

\$2,000 unframed

