




## Ernst Ludwig Kirchner – Early Woodcuts

<p><b>Ernst Ludwig Kirchner</b>  <b>Felder und Wiesen (Fields and Meadows)</b></p> <p>Colour woodcut in blue-green, 1904. Dube H 18 b</p> <p>On slightly reddish brown paper. One of 3 so far known copies pulled by the artist. Titled on the lower left with "Landschaft" (Landscape), signed on the lower right.      10,5 x 14,9 on 16 x 20,5 cm.      With the estate stamp and with the numbering „H 6“ on the verso .      Mounted by the artist on a cardboard base and marked with the Schiefler No. "6" in ink.</p> <p>Provenance: Estate of the artist (Davos 1938, Kunstmuseum Basel 1946, Stuttgarter Kunstkabinett Roman Norbert Ketterer 1954).</p> <p>Item Id: 67252</p>	
<p><b>Ernst Ludwig Kirchner</b>  <b>Mädchenkopf in Lampenbeleuchtung (Girl's Head in Lamp Light)</b></p> <p>Woodcut, 1905. Dube H 25</p> <p>On chamois handmade paper. One of 4 so far known copies pulled by the artist.      18,5 x 11,8 on 20,5 x 15,5 cm.      With the estate stamp and with the numbering „H 30“ on the verso .      Mounted by the artist on a cardboard base and marked with the Schiefler No. "30" in ink.</p> <p>Provenance: Estate of the artist (Davos 1938, Kunstmuseum Basel 1946, Stuttgarter Kunstkabinett Roman Norbert Ketterer 1954).</p> <p>Item Id: 67424</p>	
<p><b>Ernst Ludwig Kirchner</b>  <b>Trennung (Separation)</b></p> <p>Woodcut, 1905. Dube H 47</p> <p>On light grey strong handmade paper. One of 6 so far known copies pulled by the artist.      19,8 x 19,6 on 29,5 x 27,5 cm.      With the estate stamp and with the numbering „H 67 D“ in ink as well as "K 5368" in pencil on the verso.</p> <p>Provenance: Estate of the artist (Davos 1938, Kunstmuseum Basel 1946, Stuttgarter Kunstkabinett Roman Norbert Ketterer 1954).</p> <p>Item Id: 66280</p>	

**Ernst Ludwig Kirchner**  
**Strassenbild Dresden (Streetscape Dresden)**

Woodcut, 1905. Dube H 63

On chamois handmade paper. One of 5 so far known copies pulled by the artist. Signed on the lower left and marked with "Handdruck" (handprint) on the lower right.

15,9 x 12,7 on 21,7 x 17,3 cm.

With the artist's stamp "Unverkäuflich E. L. Kirchner" (Unsaleable E. L. Kirchner) as well as with the estate stamp and with the numberings "H 20", "K5923" and "C-4932" in pencil on the verso.

Mounted by the artist on a cardboard base and marked with the Schiefler No. "20" in ink.

Provenance: Estate of the artist (Davos 1938, Kunstmuseum Basel 1946, Stuttgarter Kunstkabinett Roman Norbert Ketterer 1954).

Item Id: 66183



**Ernst Ludwig Kirchner**  
**Strassenecke (Street Corner)**

Woodcut, 1905. Dube H 66

On chamois handmade paper. One of 5 so far known copies pulled by the artist. Signed on the lower left and marked with "Handdruck" (handprint) on the lower right.

12,8 x 17,8 on 17,1 x 20,6 cm.

With the artist's stamp "Unverkäuflich E. L. Kirchner" (Unsaleable E. L. Kirchner) as well as with the estate stamp and with the numbering "H 19" on the verso.

Mounted by the artist on a cardboard base and marked with the Schiefler No. "19" in ink.

Provenance: Estate of the artist (Davos 1938, Kunstmuseum Basel 1946, Stuttgarter Kunstkabinett Roman Norbert Ketterer 1954).

Item Id: 66214



**Ernst Ludwig Kirchner**  
**Sonnenuntergang im Walde (Sunset in the Forest)**

Woodcut, 1906. Dube H 75

On ribbed chamois paper. One of 2 so far known copies pulled by the artist. Numbered by the artist's brother with "K 334" on the lower left.

12,3 x 15,9 on 13 x 18,7 cm.

With stamp of Walter Kirchner, brother of the artist, as well as with the numbering „334“ on the verso.

Provenance: Estate of the artist (Davos 1938, Kunstmuseum Basel 1946, Stuttgarter Kunstkabinett Roman Norbert Ketterer 1954).

Item Id: 66420



**Ernst Ludwig Kirchner**  
**Schuppen am Elbufer (Shed on the Elbe bank)**

Woodcut, 1906. Dube H 76 II

On ribbed chamois handmade paper. One of 3 so far known copies pulled by the artist.

18 x 19,7 on 20,3 x 28,2 cm.

With the numberings "C 3552" and "K 10438" in ink and pencil as well as with the numberings "C 3552" and "224" in pencil on the verso.

Provenance: Estate of the artist (Davos 1938, Kunstmuseum Basel 1946, Stuttgarter Kunstkabinett Roman Norbert Ketterer 1954).

Item Id: 65545



**Ernst Ludwig Kirchner**  
**Unschlüssiges Mädchen (Indecisive Girl)**

Woodcut, 1906. Dube H 95

On chamois handmade paper. One of 2 so far known copies pulled by the artist. Numbered by the artist's brother with "K 225" on the lower left.

19 x 8,5 on 21 x 11 cm.

With stamp of Walter Kirchner, brother of the artist as well as with the numbering „225“ on the verso.

Provenance: Estate of the artist (Davos 1938, Kunstmuseum Basel 1946, Stuttgarter Kunstkabinett Roman Norbert Ketterer 1954).

Item Id: 66844



**Ernst Ludwig Kirchner**  
**Landschaft mit pflügendem Bauer (Landscape with plowing Farmer)**

Woodcut, 1906. Dube H 78

On chamois handmade paper. One of 2 so far known copies pulled by the artist. Signed on the lower left and marked with „Handdruck“ (handprint) on the lower right.

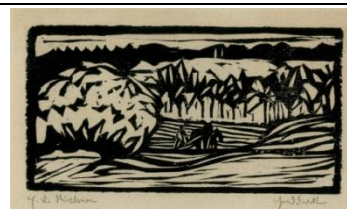
9,7 x 18,5 on 15 x 29,5 cm.

With the estate stamp and with the numbering „H54“ on the verso.

Mounted by the artist on a cardboard base and marked with the Schiefler No. "54" in ink.

Provenance: Estate of the artist (Davos 1938, Kunstmuseum Basel 1946, Stuttgarter Kunstkabinett Roman Norbert Ketterer 1954).

Item Id: 65546



**Ernst Ludwig Kirchner**  
**Landschaft mit Windmühlen (Landscape with Windmills)**

Woodcut, 1912. Dube H 211

On light handmade paper. One of 4 so far known copies pulled by the artist. Signed on the lower right.

27 x 31,5 on 38,7 x 42,7 cm.

With the estate stamp and with the numbering "H172" in ink as well as with the stamp "Unverkäuflich E. L. Kirchner" (Unsaleable E. L. Kirchner) on the verso.

Provenance: Estate of the artist (Davos 1938, Kunstmuseum Basel 1946, Stuttgarter Kunstkabinett Roman Norbert Ketterer 1954).

Item Id: 79479

