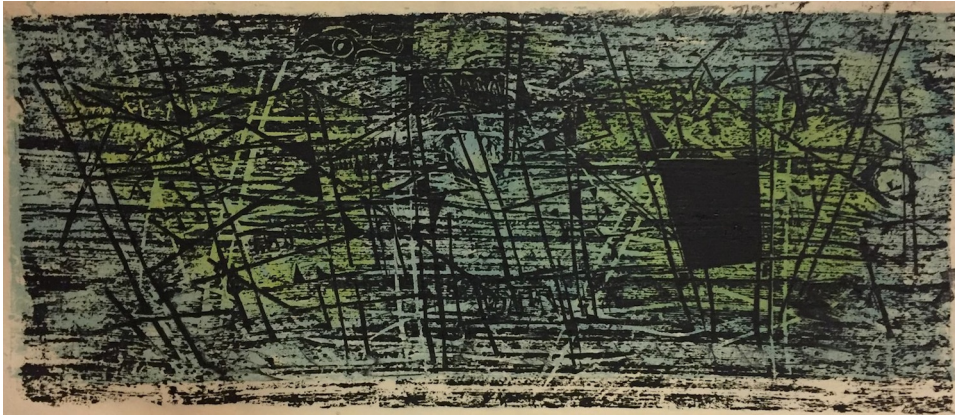


LOUIS SCHANKER:
Woodcuts on Paper, Plaster, and Wood

SUSAN TELLER GALLERY
info@susantellergallery.com
212-941-7335



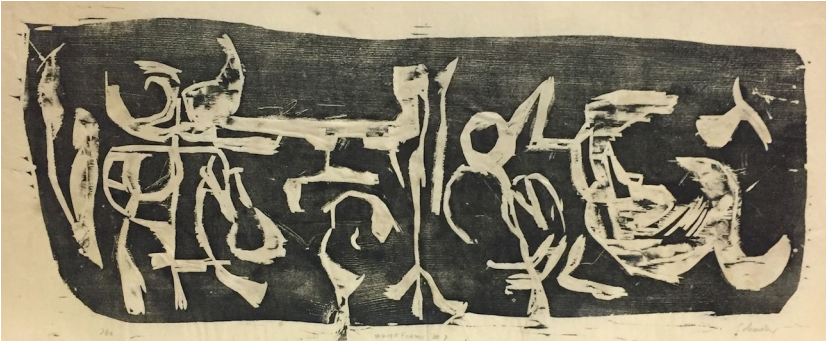
Abstract Landscape, 1945

Brooklyn Museum 63, woodcut on paper printed in blue and black
Edition of 10 in this version, 13 x 30 inches



Abstract Landscape, 1945

Made in 1955, with wire insert in the reverse
Brooklyn Museum 63, woodcut on plaster
Unique, 13 x 30 inches
Signed and titled on the reverse.

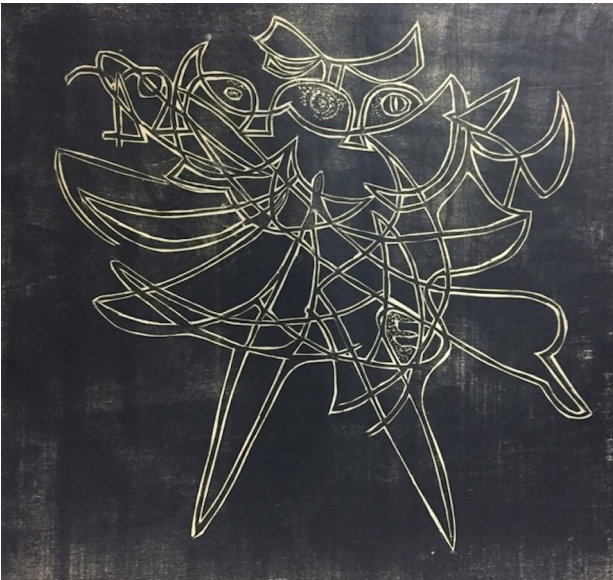


White Forms, 1948

Made from plaster matrix with resultant creases

Edition of 10, 10 x 26 inches

Signed in pencil.



Mythical Cock, 1948

Brooklyn Museum 96, woodcut

19 ½ x 21 ½ inches

Signed in pencil.



Mythical Cock, 1948

Brooklyn Museum 96, woodcut on wood (back of the block for the print)

Counterproof with hand-work.

19 ½ x 21 ½ inches; 21 x 23 with the wood 'frame'

With Willard Gallery label and old tape, set into a frame-like contraption that was made for a plaster impression.



Man at Piano, 1936

Brooklyn Museum 8, woodcut

Edition of 20, 8 ¾ x 6 inches

Signed in pencil.

\$750



Football (Dark), 1940

Brooklyn Museum 39, woodcut, trial proof

Edition of 55 plus 20 trial proofs, 10 ¼ x 14 inches

Tiny hole near center of image, paper break in lower margin just outside of image.

Signed and annotated "Proof of Football," in pencil.



Football/Forms in Action, 1938

This drawing is a preparatory study for both *Football*, 1940, and *Forms in Action*, 1941.

Watercolor, 13 x 15 inches, the sheet

Signed and dated in ink lower right.



Forms in Action, 1941
Brooklyn Museum 48, woodcut
Edition of 30, 10 x 14 inches
Signed in pencil.