

EMANUEL VON BAEYER
CABINET

A Private Collection

**Prints and Drawings
spanning
Five Centuries**

IFPDA Online Viewing Room

August 2020

**EMANUEL VON BAEYER
CABINET**

Emanuel von Baeyer Cabinet is pleased to present a selection of works from our new online exhibition of prints and selected drawings spanning five centuries.

The selection stems from a private collector whose focus on printmaking and very fine and early impressions, often with an important provenance, is reflected in this display.

The exhibition spans a range of subjects, including portraits, allegories, genre scenes, decorative arts, urban and garden views.

The works cover five centuries, dating from the Italian Renaissance to the German New Objectivity. To reflect this range, the display on our website is split by school - Italian, French, English, Dutch and German - and is then presented chronologically.

Please visit <https://evbaeyer-cabinet.com/> to view the full exhibition.

EMANUEL VON BAEYER
CABINET



Giulio Romano

1499 Rome - 1546 Mantua

Study of a Bitch. c. 1530

EMANUEL VON BAEYER
CABINET

Pen and brown ink. Size of sheet: 11.7 x 18.8 circa.

Study of the bitch's head in profile on the verso, visible through a cut out opening on the mount.

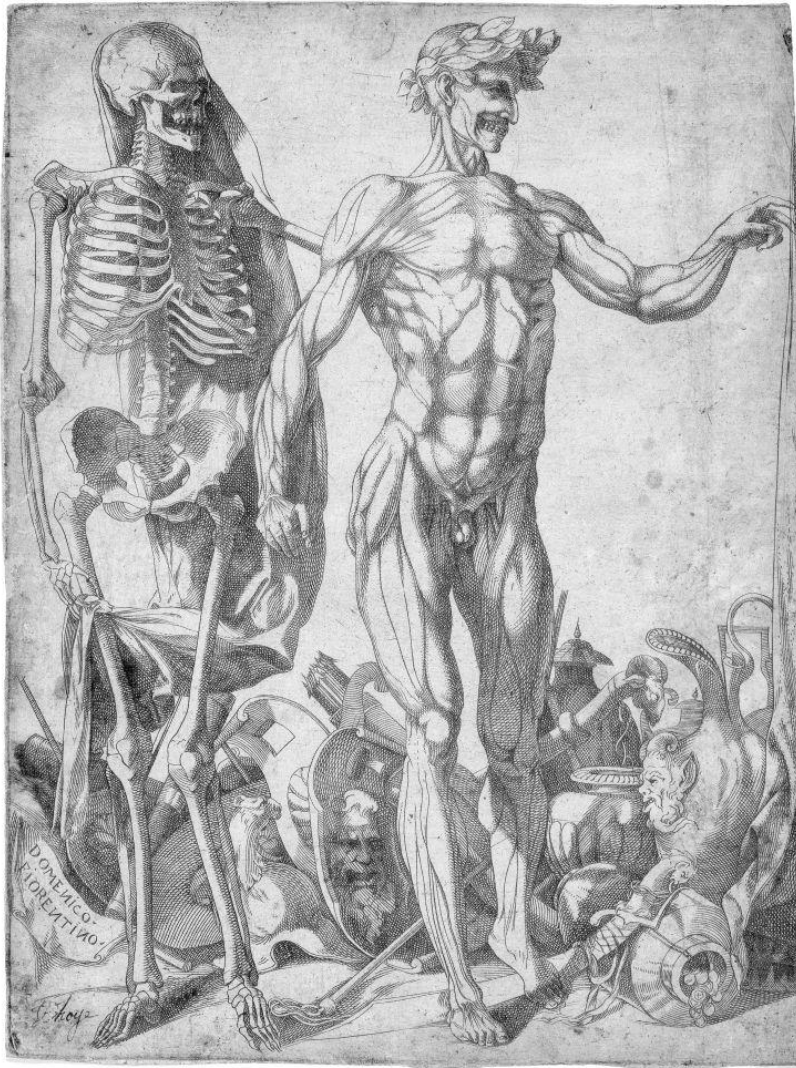
Provenance: Jonathan Richardson Sr. (L. 2183), his mount and inscription 'Annibale Carracci', his shelf number on the verso: Zb. 8./CC.2/C.47/m.;
Richard Houlditch (L. 2214);
Christian David Ginsburg (L. 1145),
possibly his sale London, Sotheby's, 20-23 July 1915, part of lot 32 (Giulio Romano. Various classical and other subjects);
Sotheby's Sale, Old Master and British Drawings, 8 July 2015, London, lot. 47.

Traditionally attributed to Annibale Carracci, this drawing was given to Giulio Romano by Philip Pouncey. Most surely drawn from life, it belongs to a group of animal studies formerly in the collection of Jonathan Richardson, Senior, in some of which we see this same unusually delicate use of the pen. One of these, a study of a Leaping Hound that was on the art market in 1972, has been associated with Giulio's frescoed medallion of Asses under Ray from Mars, in the Sala dei Venti at Palazzo Te, Mantua, where very similar dogs can be found (1). Another pen and brown ink study of a dog, again from Richardson's collection and also associated with the same medallion in Palazzo Te, was sold in 1973 (2).

£ 9500.-

1. Sale, London, Sotheby's, 23 March 1972, lot 108; see F. Hartt, Giulio Romano, New Haven 1958, vol. II, reproduced fig. 199.

2. Sale, London, Christie's, 10 July 1973, lot 71.



Domenico del Barbieri

c. 1506 - Florence - c. 1570

A skeleton and an écorché. Circa 1540-45.

EMANUEL VON BAEYER
CABINET

Engraving. Size of sheet: 24 x 18.2 cm.

Literature: Bartsch XVI.359.8;

Henry Zerner, *Ecole de Fontainebleau. Gravures*, Paris, 1969, D.B.10.

Provenance: Carl von Fischheim († vers 1838) (L. 536);

Gustave Déloye (L. 756).

Signed in plate 'DOMENICO FIORENTINO' (bottom left).

This is the left half of a larger print representing Two Flayed Men and Their Skeletons (BM inv. 1851,0208.101). According to Zerner, Domenico del Barbieri elaborated the composition after drawings by Rosso Fiorentino.

£ 1200.-



Italian School

Circa 1600

Portrait of Ranuccio I Farnese.

EMANUEL VON BAEYER
CABINET

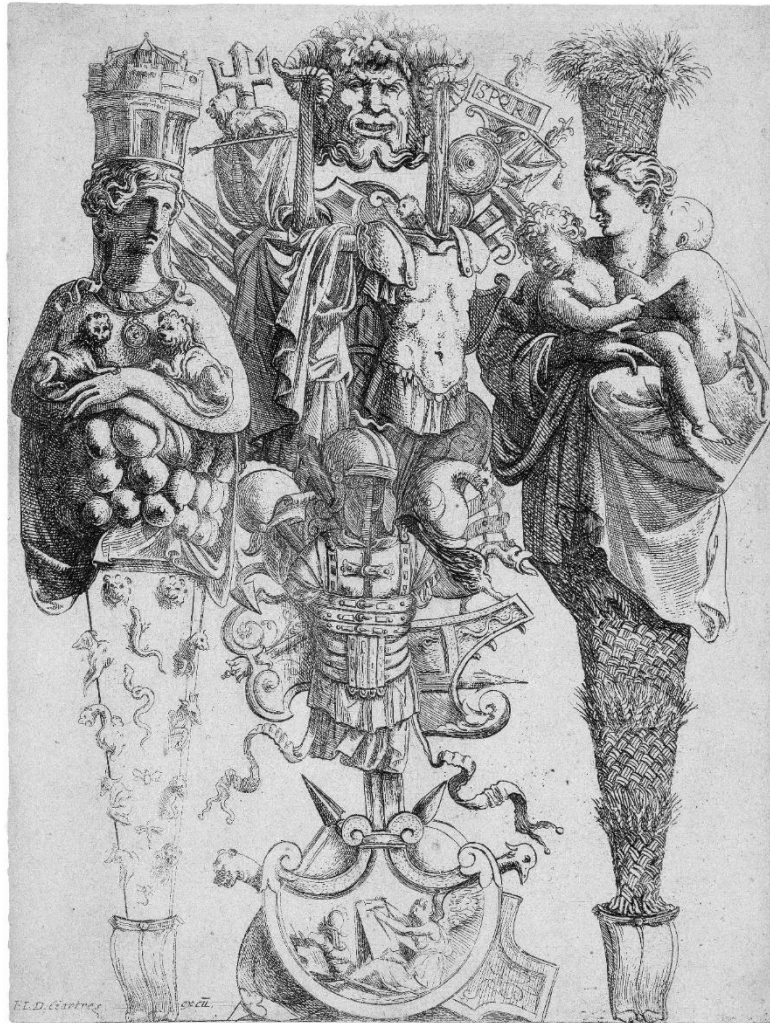
Engraving. Size of sheet: 35.8 x 23.6 cm.

Provenance: Princes of Lichtenstein Collection, Vaduz;

Joseph Gulston (1745–1786), (L.2986).

Very rich and dark impression after a painting by Cesare Aretusi (1549 - Bologna - 1612), now in the Galleria Nazionale di Parma. Trimmed to the platemark.

£ 1600.-



Pierre Biard the Younger

1592 - Paris - 1661

Les Termes de Cérès et de Cybele. 1607-1661

EMANUEL VON BAEYER
CABINET

Etching after Giulio Romano (1499 Rome -1546 Mantua). Size of sheet: 25.5 x 19.2 cm.

Watermark: Grape.

Literature: Dumesnil V.106.19.

Provenance: Hippolyte Destailleur (1822 - Paris -1893), (L. 740).

Lettered 'F.L.D. Ciarires excu.' (publisher François Langlois, called Ciatres).

Very fine and rich impression of this very rare print.

£ 4500.-



William Hogarth

1697 - London - 1764

The Cock Pit. 1759.

Etching and engraving. Size of plate: 31.6 x 38.4 cm. Size of sheet: 34.3 x 41 cm.

Literature: Paulson 206.

Provenance: Lady Tennant's album.

This famous image in a very fine impression of the only state with margins all around.

Lettered 'Design'd and Engrav'd by Willm Hogarth' and 'Published according to Act of Parliament Nov 5th 1759'.

£ 2800.-

**EMANUEL VON BAEYER
CABINET**



Henri Charles Guerard

1846 - Paris - 1897

Portrait du comte Robert de Montesquiou-Fenzensac after Whistler. Circa 1894.

EMANUEL VON BAEYER
CABINET

Etching, drypoint and roulette. Size of plate: 25.2 x 11 cm. Size of sheet: 33 x 17 cm.

Literature: E.F.F. 68.

Proof before lettering and before the reduction of the plate.

Signed in red ink on the image 'H. Guerard' (bottom right). Two of the artist's monogram stamps below the image.

The print is after the painting 'Arrangement in Black and Gold: Comte Robert de Montesquiou-Fezensac' by Whistler, now in the Frick Collection, New York (inv. 1914.1.131).

£ 950.-



Hendrick Goltzius

1558 Muhlbracht - 1617 Haarlem

Portrait medallion of Arnoud van Beresteijn. 1579 circa.

EMANUEL VON BAEYER
CABINET

Engraving. Size of oval plate: 4.5 x 3.4 cm.

Literature: Bartsch III.61.192;

Hirschmann 175, only state.

Lettered around the image "TOUSIOURS OU IAMAIS. ÆTA 23." Trimmed around the image.

The preparatory silverpoint drawing is in the Teylers Museum, Haarlem (Reznicek 262).

Arnoud van Beresteyn (1556-1612) was a connoisseur and collector of drawings in Haarlem.

£ 1200.-

EMANUEL VON BAEYER
CABINET



Willem Outgertsz Akersloot

circa 1600 Haarlem - after 1651 The Hague

Portrait of Frederik Hendrik Prince of Orange. 1628.

EMANUEL VON BAEYER
CABINET

Engraving. Size of plate: 20.9 x 16.1 cm. Size of sheet: 22.1 x 17.8 cm.

Literature: Hollstein 3 I/IV.

Impeccable impression with small margins of the first state.

£ 3500.-

**EMANUEL VON BAEYER
CABINET**



Adriaen van Ostade

1610 - Haarlem -1684/1685

Bust of a Laughing Peasant. 1672.

EMANUEL VON BAEYER
CABINET

Etching. Size of sheet: 7 x 5.6 cm.

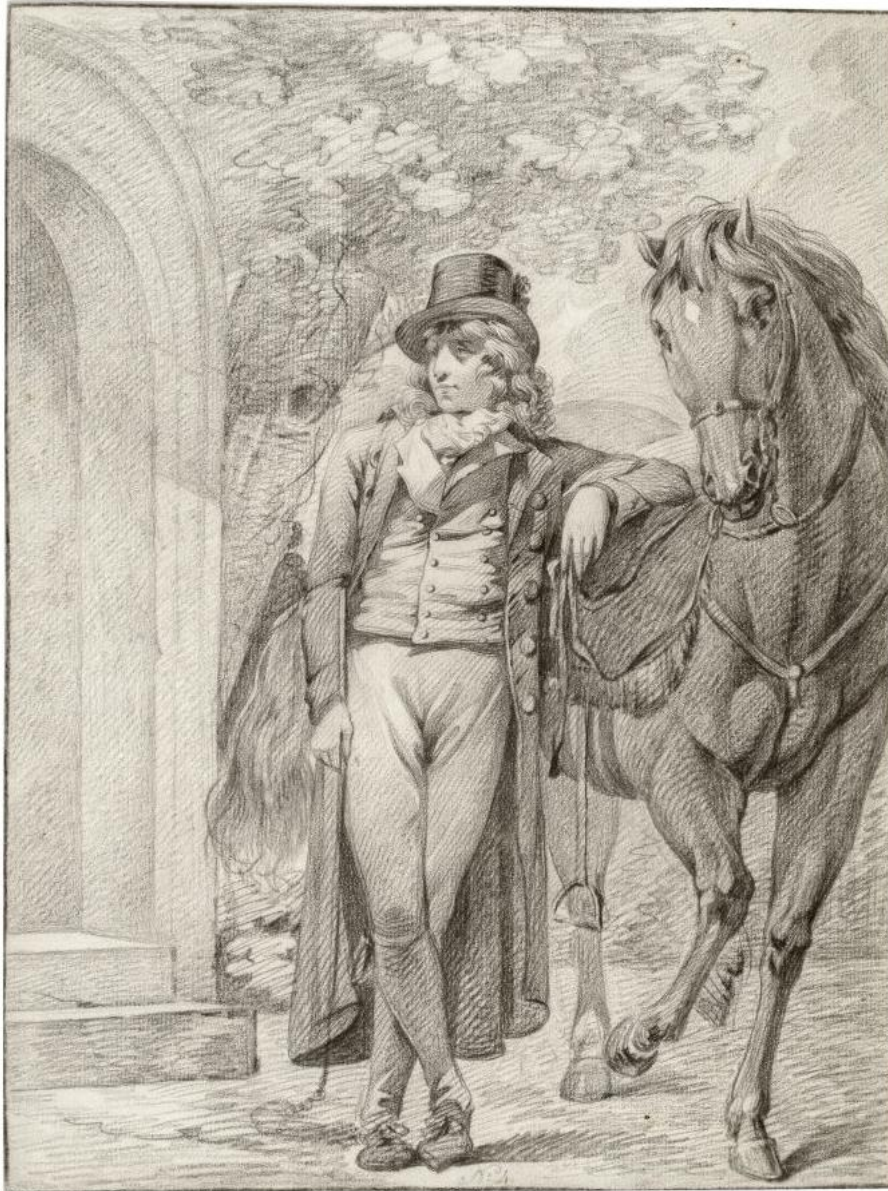
Literature: Hollstein 4. VI/IX;
Godefroy 4. VI/IX.

Provenance: Wilhelm Koller († 1871) (L. 2632);
Delonglade (Not in Lugt);
Franz Sokorny (mid-19th century) (L.2036).

Very fine impression before the monogram. Trimmed to the platemark.

£ 1200.-

EMANUEL VON BAEYER
CABINET



George Nikolaus Ritter

1748 Heilbronn - 1809 Amsterdam

Gentleman leaning against his horse, under a tree and next to an archway.

**EMANUEL VON BAEYER
CABINET**

Black chalk on white bluish paper. Size of sheet: 34.7 x 26.2 cm. Framed.

Inscribed in pencil 'No 4' (bottom centre). Old inscription 'N. Ritter' in pen and ink on the backing cardboard.

£ 3000.-