

20 Cork Street, London, W1S 3HL
T +44 (0)20 77341732
redfern-gallery.com
art@redfern-gallery.com



CYRIL EDWARD POWER 1872-1951

Acrobats 1933

Linocut

25.4 x 23.2 cm (10 x 9.1 in)

- Information:** From two blocks (printed in: yellow and cobalt blue) on buff oriental laid tissue (the final state was in three colours: yellow ochre, red and viridian). Titled, inscribed and signed in pencil in image lower centre: 'Acrobats E.P. Cyril.E.Power'. This is a proof, in a unique colour combination, aside the numbered edition of 60 impressions
- Exhibition:** *British Prints from the Machine Age - Rhythms of Modern Life 1914-1939*, Museum of Fine Arts, Boston; The Metropolitan Museum of Art, New York and The Wolfsonian-Florida International University, January 30, 2008 - February 28, 2010, Catalogue No 91 (another impression shown)
- Reference:** Redfern X, No 34
Linocuts of the Machine Age - Claude Flight and the Grosvenor School by Stephen Coppel, Scolar Press in association with the National Gallery of Australia, 1995, Catalogue No CEP 42
- Collection:** The Metropolitan Museum of Art, New York (another impression)
- Notes:** This print was inspired by Power's observations of trapeze artists at the Bertram Mills Circus in London



SYBIL ANDREWS 1898-1992

Pilate: Station I 1953

Linocut

33 x 30 cm (13 x 11.8 in)

Information: From three blocks on buff oriental laid tissue. Titled, numbered and signed in pencil in image upper right: "Pilate" 4/60 Station I Sybil Andrews'

Reference: *Linocuts of the Machine Age - Claude Flight and the Grosvenor School* by Stephen Coppel, Scolar Press in association with the National Gallery of Australia, 1995, Catalogue No SA 53

Collection: British Museum (another impression)



SYBIL ANDREWS 1898-1992

Market Day 1936

Linocut

28 x 33.6 cm (11 x 13.2 in)

Information: From five blocks (printed in: ochre, spectrum red, viridian, permanent blue and Chinese blue) on buff oriental laid tissue. Titled, signed and numbered in pencil in image lower right: 'Market Day Sybil Andrews 28/60'

Reference: *Linocuts of the Machine Age - Claude Flight and the Grosvenor School* by Stephen Coppel, Scolar Press in association with the National Gallery of Australia, 1995, Catalogue No SA 38

Collections: Auckland Art Gallery Toi o Tamaki, New Zealand; British Museum; Glenbow Museum, Calgary; National Gallery of Victoria, Melbourne; The Metropolitan Museum of Art, New York (other impressions)

Notes: This print was inspired by Andrews' memories of the busy market in her native town Bury St Edmunds



CYRIL EDWARD POWER 1872-1951

The Concerto c.1935

Linocut

32 x 30 cm (12.6 x 11.8 in)

- Information:** From four blocks (printed in: light yellow; orange; light blue and dark blue) on buff oriental laid tissue. Titled, numbered and signed in pencil in image top left: 'The Concerto' No 19/60 Cyril.E.Power'
- Exhibition:** *British Prints from the Machine Age - Rhythms of Modern Life 1914-1939*, Museum of Fine Arts, Boston; The Metropolitan Museum of Art, New York and The Wolfsonian-Florida International University, January 30, 2008 - February 28, 2010, Catalogue No 86 (another impression shown)
- Reference:** *Linocuts of the Machine Age - Claude Flight and the Grosvenor School* by Stephen Coppel, Scolar Press in association with the National Gallery of Australia, 1995, Catalogue No CEP 43
- Collection:** The Metropolitan Museum of Art, New York (another impression)
- Notes:** For this print Power was inspired by a Henry Wood concert at Queen's Hall, Langham Place in London which was destroyed in the Blitz in 1941. Sybil Andrews's linocut *Concert Hall* (1929) was also inspired by Queen's Hall.

Mr Cyril Power has himself inscribed a piece of music in which the curving tiers of seats represent the bars and the players the notes. The rhythm of the lines undoubtedly gives one the sense of sound translated pictorially (Christian Science Monitor, 3 January, 1936).



SYBIL ANDREWS 1898-1992

Speedway 1934

Linocut

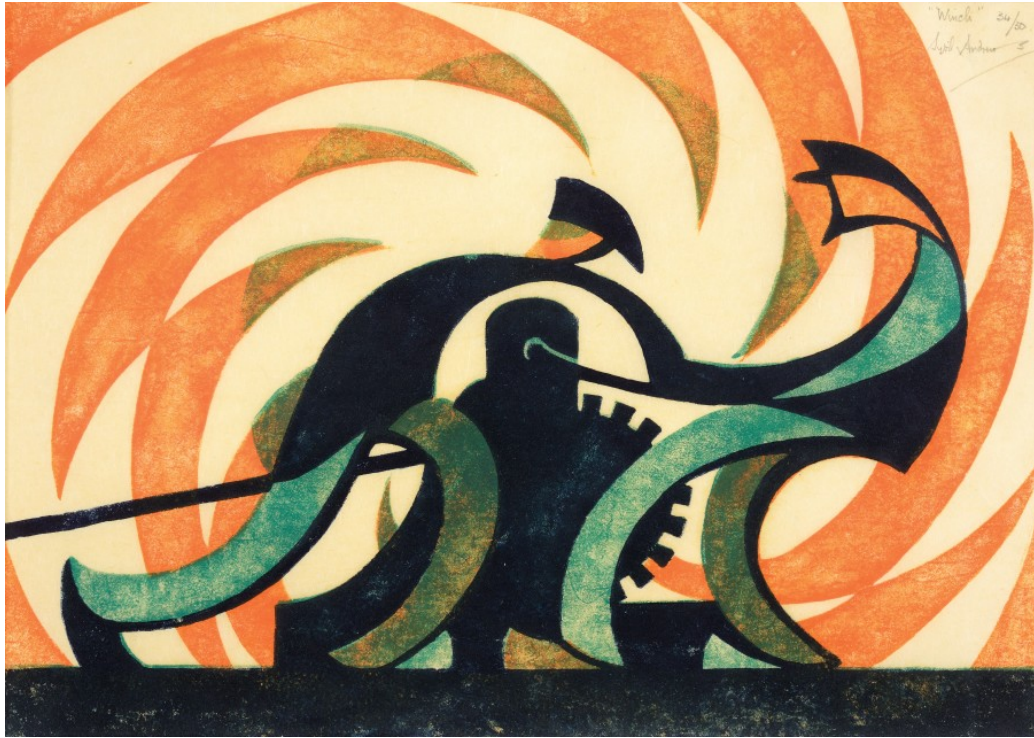
32.6 x 23.3 cm (12.8 x 9.2 in)

Information: From four blocks (printed in: raw sienna; venetian red; permanent blue and Chinese blue) on cream fibrous oriental laid paper. Titled, signed and numbered 47/60.

Exhibited: *British Prints from the Machine Age - Rhythms of Modern Life 1914-1939*, Museum of Fine Arts, Boston; The Metropolitan Museum of Art, New York and The Wolfsonian-Florida International University, January 30, 2008 - February 28, 2010, Catalogue No 30 (another impression shown)

Reference: *Linocuts of the Machine Age - Claude Flight and the Grosvenor School* by Stephen Coppel, Scolar Press in association with the National Gallery of Australia, 1995, Catalogue No SA 29

Collections: Auckland Art Gallery Toi o Tamaki, New Zealand; Glenbow Museum, Calgary; National Gallery of Australia, Canberra; Museum of Modern Art, New York; The Metropolitan Museum of Art, New York (other impressions).



SYBIL ANDREWS 1898-1992

The Winch

1930

Linocut

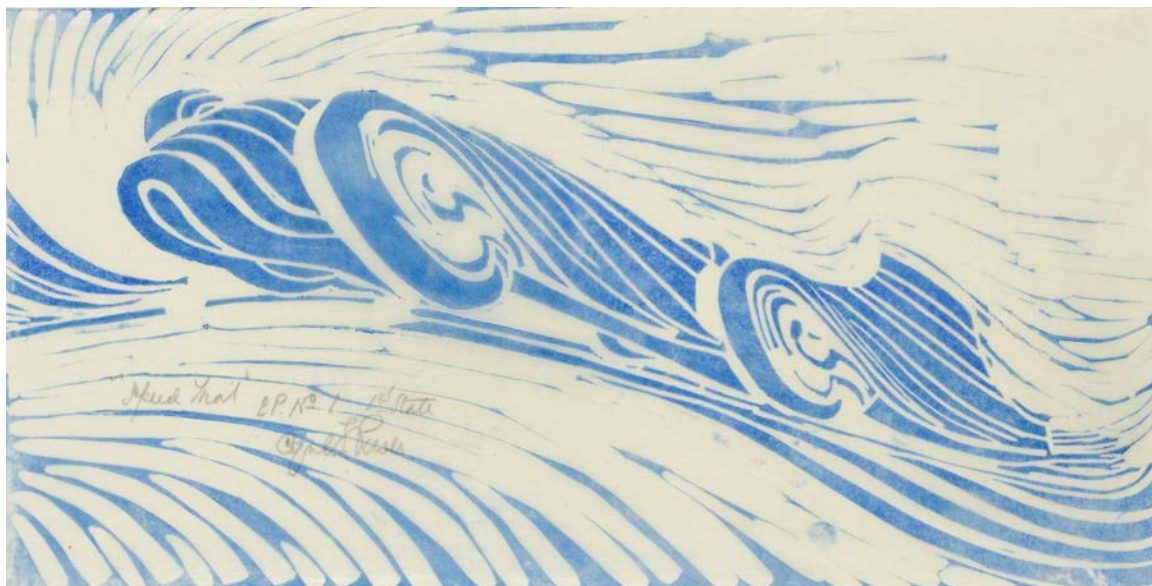
20 x 28 cm (7.8 x 11 inches)

Information: Printed from 3 blocks on oriental laid tissue.
Signed, titled and numbered 34/50.

Reference: *Linocuts of the Machine Age - Claude Flight and the Grosvenor School* by Stephen Coppel, Scolar Press in association with the National Gallery of Australia, 1995, Catalogue No SA 6

Collections: British Museum; Glenbow Museum, Calgary; National Gallery of Australia, Canberra; Metropolitan Museum of Art, New York (other impressions)

Miss Sybil Andrews and Mr Cyril Power are the best of Mr Claude Flight's disciples. The "Steeplechasing" and "Winch" of the one and "The Eight" of the other are excellent examples of mechanical design... (Morning Post, 25 July, 1930)



CYRIL EDWARD POWER 1872-1951

Speed Trial c. 1932

Linocut

20 x 38 cm (7.9 x 15 inches)

Information: Printed from 1 block in permanent blue on buff oriental laid tissue.
Signed, titled and inscribed 'EP No. 1 1st State'.

The first EP, printed in permanent blue only. The second EP sees the introduction of emerald green and spectrum red into the image. The early EPs are notable for the airflow lines in the upper background, which were ultimately removed in the final numbered edition of 60 impressions.

Reference: *Linocuts of the Machine Age - Claude Flight and the Grosvenor School* by Stephen Coppel, Scolar Press in association with the National Gallery of Australia, 1995, Catalogue No CEP 31

Collections: Auckland Art Gallery Toi o Tamaki, New Zealand; National Gallery of Australia, Canberra; Museum of Modern Art, New York; The Metropolitan Museum of Art, New York (other impressions)

Notes: This print was inspired by Malcolm Campbell's 'Bluebird', the record-breaking aerodynamic speed machine which reached 246 mph at Dayton Beach, Florida, in February, 1931.



SYBIL ANDREWS 1898-1992

Steeplechasing 1930

Linocut

17.3 x 27 cm (6.8 x 10.6 in)

Information: Printed from three blocks on buff oriental laid tissue. Signed and numbered 5/50 in image top left.

Reference: *Linocuts of the Machine Age - Claude Flight and the Grosvenor School* by Stephen Coppel, Scolar Press in association with the National Gallery of Australia, 1995, Catalogue No SA 10

Collections: Auckland Art Gallery Toi o Tamaki, New Zealand; Art Gallery of South Australia, Adelaide; Glenbow Museum, Calgary; National Gallery of Australia, Canberra; The Metropolitan Museum of Art, New York (other impressions)

Miss Sybil Andrews and Mr Cyril Power are the best of Mr Claude Flight's disciples. The "Steeplechasing" and "Winch" of the one and "The Eight" of the other are excellent examples of mechanical design...! (Morning Post, 25 July, 1930)



LILL TSCHUDI 1911-2004

Nudes 1933

Linocut

26 x 28 cm (10.2 x 11 inches)

Information: From 5 blocks (printed in: cobalt blue; yellow ochre; pale reddish brown; darker reddish brown and dark blue) on thin off-white oriental laid paper. Signed and numbered 15/50 in pencil image upper right. Titled in English in pencil lower margin.

Reference: *Linocuts of the Machine Age - Claude Flight and the Grosvenor School* by Stephen Coppel, Scolar Press in association with the National Gallery of Australia, 1995, Catalogue No LT 30

Collections: National Art Gallery of New Zealand, Te Papa Tongarewa; National Gallery of Australia, Canberra; The Metropolitan Museum of Art, New York (other impressions)



LILL TSCHUDI 1911-2004

Jazz Band 1930

Linocut

18.8 x 17 cm (7.4 x 6.7 inches)

Information: From 3 blocks (printed in: cobalt blue, pink and yellow) on thin white mulberry paper. Signed and numbered 15/50 in pencil in image upper right. Annotated in pencil 'Handdruck' in image upper left. Titled in German 'Jass Band' in pencil in lower right margin and verso.

Reference: *Linocuts of the Machine Age - Claude Flight and the Grosvenor School* by Stephen Coppel, Scolar Press in association with the National Gallery of Australia, 1995, Catalogue No LT 6

Collections: Art Gallery of New South Wales, Sydney; The Metropolitan Museum of Art, New York (other impressions)