



GILDEN'S ART GALLERY

## **THE HEART OF ASIA - LYRICAL ABSTRACTION AND FIGURATISM**

Thursday, November 19, 2020 to Wednesday, December 30, 2020

We are delighted to present a selection of original lithographs, etchings and aquatints, and watercolours from three of the most important Chinese artists of the 20th Century.

Zao Wou-Ki 趙無極 and Chu Teh-Chun 朱德尊 flourished in the Parisian art scene and brought immense creative and technical skills to printmaking in France. Whilst Walasse Ting 丁聰 became a leading figure of the abstraction movement in New York, renowned for his vibrant watercolours.

Gilden's Art Gallery

Chu Teh-Chun

朱德群

Walasse Ting

丁雄泉

Zao Wou-Ki

赵无极



index1

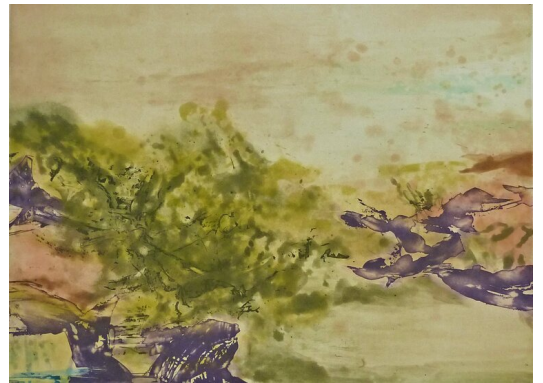
ZAO WOU-KI (1921-2013) 赵无极

Etching No. 325, 1986

57.5 x 76.5 cm (h x w)

Etching and Aquatint in Colours on Wove Paper

USD 9000



ZAO WOU-KI (1921-2013) 赵无极

Etching No. 190, 1968

75 x 56 cm (h x w)

Etching and Aquatint in Colours on Wove Paper

USD 8000



---

ZAO WOU-KI (1921-2013) 赵无极

Untitled 159, 1965

69.5 x 44.5 cm (h x w)

Lithograph in colours on wove paper

USD 11000



---

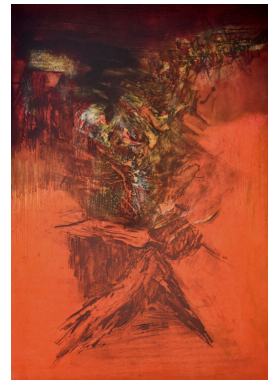
ZAO WOU KI (1921-2013) 赵无极

Composition I, from: Canto Pisan, 1972

52 x 35 cm (h x w)

Etching and Aquatint in Colours

USD 7000



---

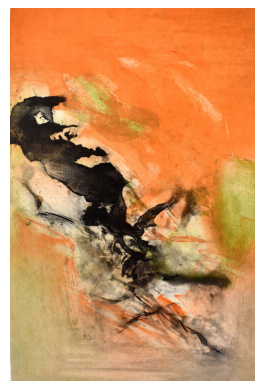
ZAO WOU KI (1921-2013) 赵无极

Composition II, from: Canto Pisan, 1972

52 x 35 cm (h x w)

Etching and Aquatint in Colours

USD 5500



---

ZAO WOU-KI (1921-2013) 赵无极

Composition III, from: Canto Pisan, 1972

52 x 35 cm (h x w)

Etching and Aquatint in Colours

USD 5000



---

ZAO WOU KI (1921-2013) 赵无极

Composition IV, from: Canto Pisan, 1972

52 x 35 cm (h x w)

Etching and Aquatint in Colours

USD 5000



---

ZAO WOU KI (1921-2013) 赵无极

Composition V, from: Canto Pisan, 1972

52 x 35 cm (h x w)

Etching and Aquatint in Colours on Japan Paper

USD 5500



---

ZAO WOU-KI (1921-2013) 赵无极

Composition VI, from: Canto Pisan, 1972

52 x 35 cm (h x w)

Etching and Aquatint in Colours on Japan Paper

USD 5000



---

ZAO WOU-KI (1921-2013) 赵无极

Composition VII, from: Canto Pisan, 1972

52 x 35 cm (h x w)

Etching and Aquatint in Colours on Japan Paper

USD 5500



---

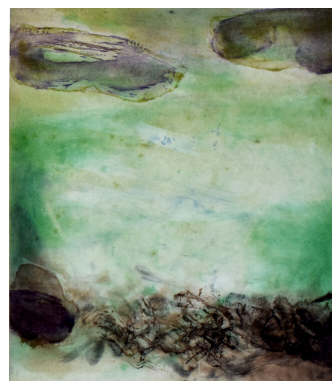
ZAO WOU-KI (1921-2013) 赵无极

Composition VIII, from: Canto Pisan, 1972

52 x 35 cm (h x w)

Etching and Aquatint in Colours on Japan Paper

USD 5000





---

WALASSE TING (1929-2010) 丁巳

Women with Fans and Bird, 1990

63.7 x 84.3 cm (h x w)

Watercolour and Ink

USD 40000



---

WALASSE TING (1929-2010) 丁巳

Reclining Woman with Horseriders, 1990s

37 x 47 cm (h x w)

Watercolour and Ink

USD 12000



---

ZAO WOU-KI (1921-2013) 趙無極

Composition I, from Rambles | Randonnées, 1974

55 x 37 cm (h x w)

Etching and Aquatint in Colours on Japan Paper

USD 5000



---

ZAO WOU-KI (1921-2013) 赵无极

Untitled, from: 12th Anniversary Galeria Joan Prats 1976-88  
Portfolio, 1986

38 x 56 cm (h x w)  
Lithograph in colours on wove paper  
USD 7000



---

ZAO WOU KI (1921-2013) 赵无极

Untitled No. 289, 1978

54 x 76 cm (h x w)  
Lithograph in colours on wove paper  
USD 8000



---

ZAO WOU-KI (1921-2013) 赵无极

Etching No. 210, 1970

76 x 56 cm (h x w)  
Etching and Aquatint in Colours on Wove Paper  
USD 12000



---

CHU TEH-CHUN (1920-2014) 齊白石

Village in a Red Rain, 1960

50.5 x 66 cm (h x w)

Lithograph in colours on wove paper

USD 3800



---

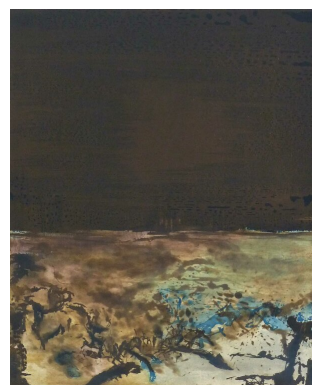
ZAO WOU-KI (1921-2013) 趙無極

Etching No. 328, 1986

76 x 57.2 cm (h x w)

Etching and Aquatint in Colours on Wove Paper

USD 10000



---

ZAO WOU-KI (1921-2013) 趙無極

Mountains and Sun | Montagnes et soleil, 1951

38 x 57 cm (h x w)

Lithograph in colours on wove paper

USD 11000





---

ZAO WOU-KI (1921-2013) 赵无极

Engulfed Town | Ville engloutie, 1956

56 x 76 cm (h x w)

lithograph in colours

USD 12500



---

ZAO WOU KI (1921-2013) 赵无极

Between Two Towns | Entre deux villes, 1955

55 x 65 cm (h x w)

Lithograph in colours on wove paper

USD 9000



---

ZAO WOU-KI (1921-2013) 赵无极

Little Garden | Le petite jardin, 1956

45.5 x 56.3 cm (h x w)

Lithograph in colours on wove paper

USD 9000

