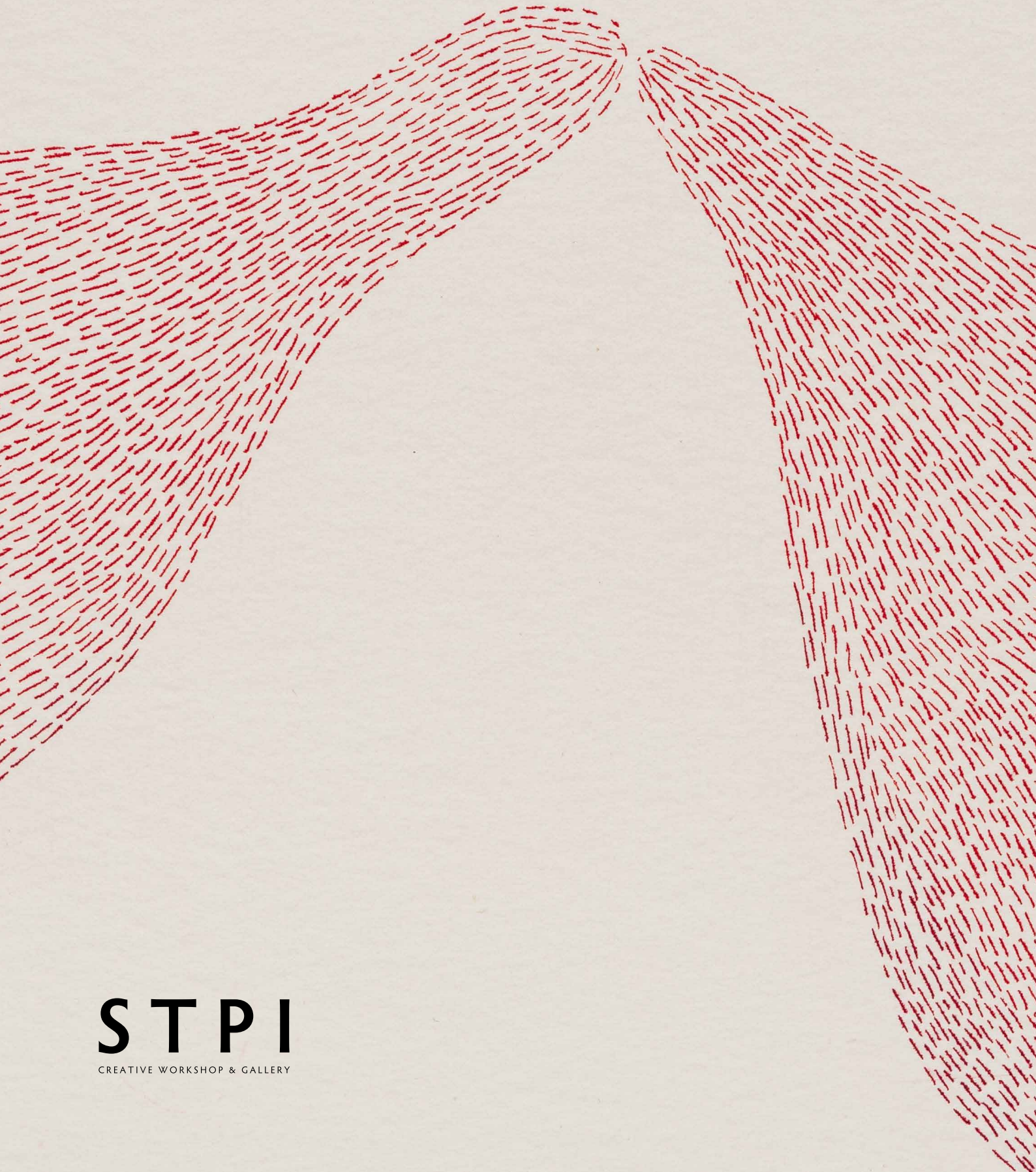


Pinaree Sanpitak

Fragmented Bodies:

The Personal and The Public

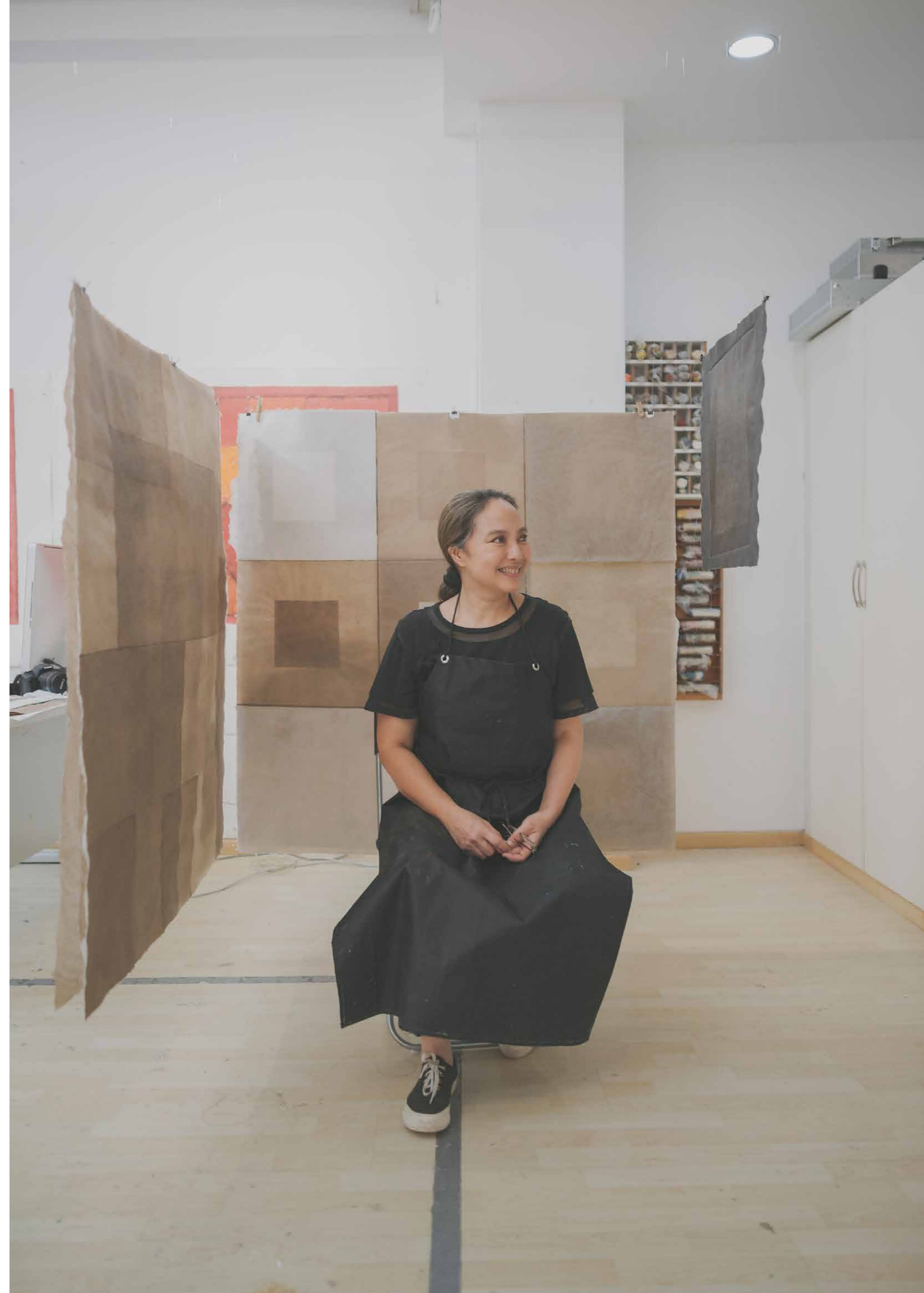


STPI

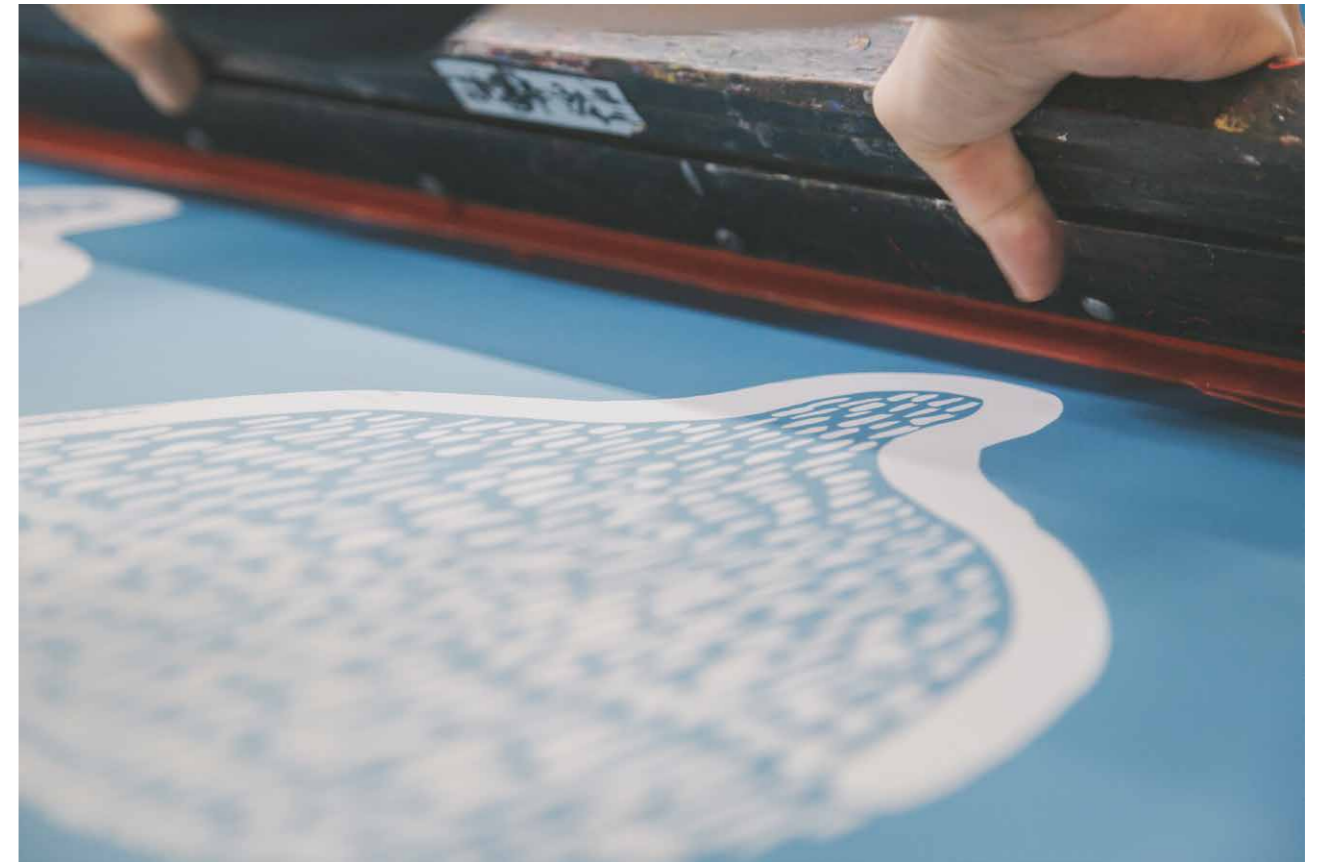
CREATIVE WORKSHOP & GALLERY

Born in 1961, Bangkok, Pinaree Sanpitak is one of the most established Thai conceptual artists of her generation. Her artistic practice revolves around the human body and form as a vessel of experience and perception. A recurring motif in her work, the female breast is distilled into its basic form of vessel and mound, resembling the Buddhist stupa (shrine) and offering bowl on occasion. Her sensorial inquiries also reveal a keen sensitivity towards a range of materials such as textiles, glass, ceramic, and metal, informing her various approaches in collage, drawing, painting, printmaking, and sculpture. This results in an astoundingly varied and innovative body of work.

Over the past thirty years, Sanpitak's work has been featured in numerous museums and major biennales across Asia, Europe, and the United States. She will be presenting her work at the upcoming Setouchi Triennale in Honjima, Japan (2019). Her recent community collaborative projects include *Breast Stupa Topiary* and *Breast Stupa Cookery* at the Jim Thompson Farm in Thailand (2018). A large-scale hanging fabric installation *The Roof*, commissioned by Arts Brookfield, was on view at the Brookfield Place Winter Garden in Battery Park City in New York (2017). An overview of her work from 1995-2013 was showcased in a solo exhibition, *Collection +: Pinaree Sanpitak*, at the Sherman Contemporary Art Foundation in Sydney, Australia (2014). The artist presented *Hanging by a Thread* at the Los Angeles County Museum of Art (2013), a solo exhibition featuring her large-scale installation of the same title, which was subsequently acquired by said institution. Another large-scale installation, *Temporary Insanity*, was exhibited at the Chrysler Museum in Norfolk, Virginia (2012) and subsequently at The Contemporary Austin in Austin, Texas (2013). At the 18th Biennale of Sydney (2012) she showcased a large-scale installation, *Anything Can Break*, at the Museum of Contemporary Art Australia. The installation comprises thousands of origami "flying cubes" and breast-shaped glass clouds suspended from the ceiling, with musical motifs triggered by motion sensors in response to the audience's movements.









Offering Vessel 1

PS18-117

2018

Screenprint on paper

Unique

Unframed: 77.5 x 112 cm

Framed: 83 x 117.5 x 4.5 cm



Two Breasts 3

PS18-123

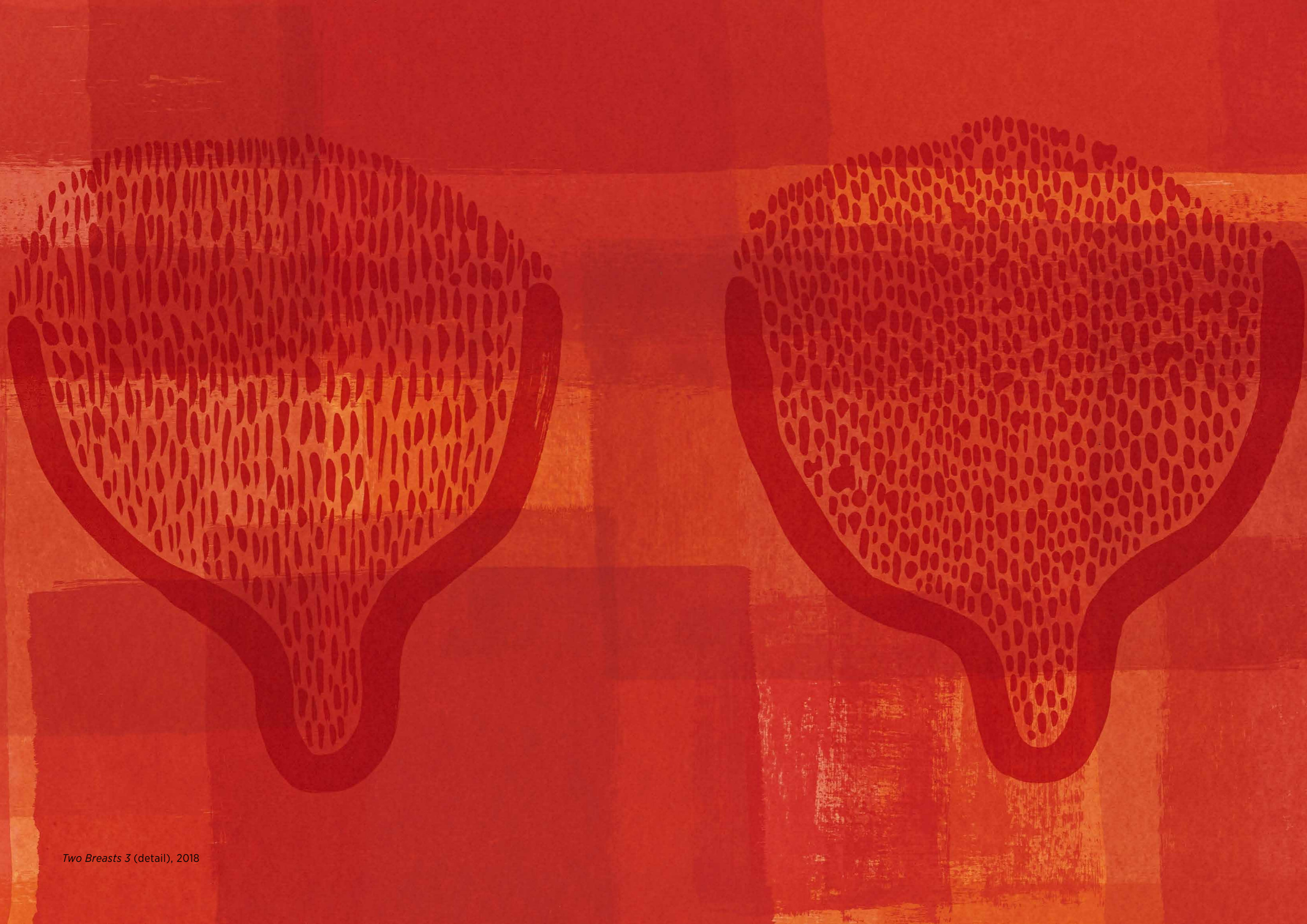
2018

Screenprint on paper

Unique

Unframed: 77.5 x 112 cm

Framed: 83 x 117.5 x 4.5 cm



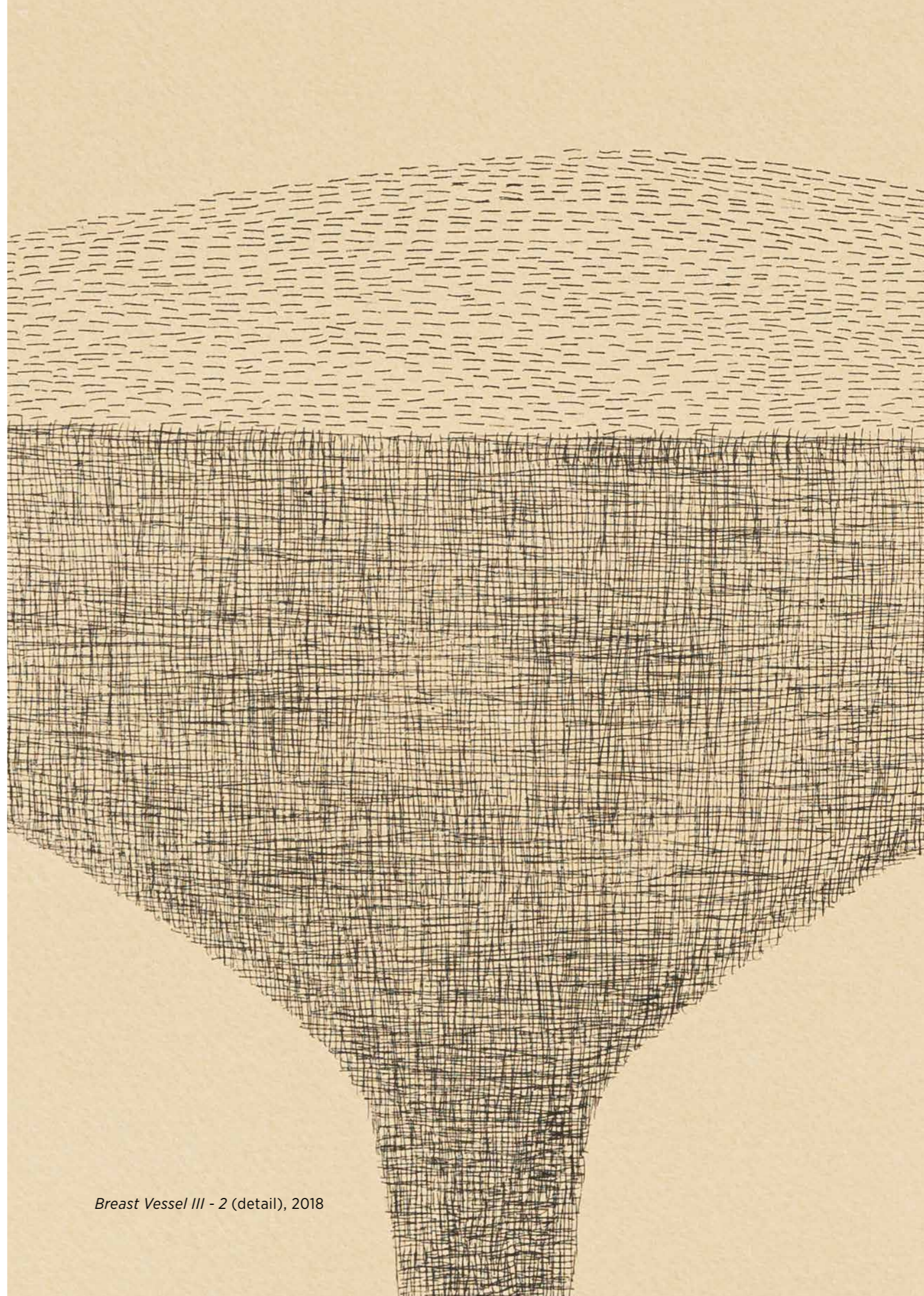
Two Breasts 3 (detail), 2018







Breast Vessel III - 2
PS18-143
Etching and relief print on paper
Unframed: 46 x 56 cm



Breast Vessel III - 2 (detail), 2018



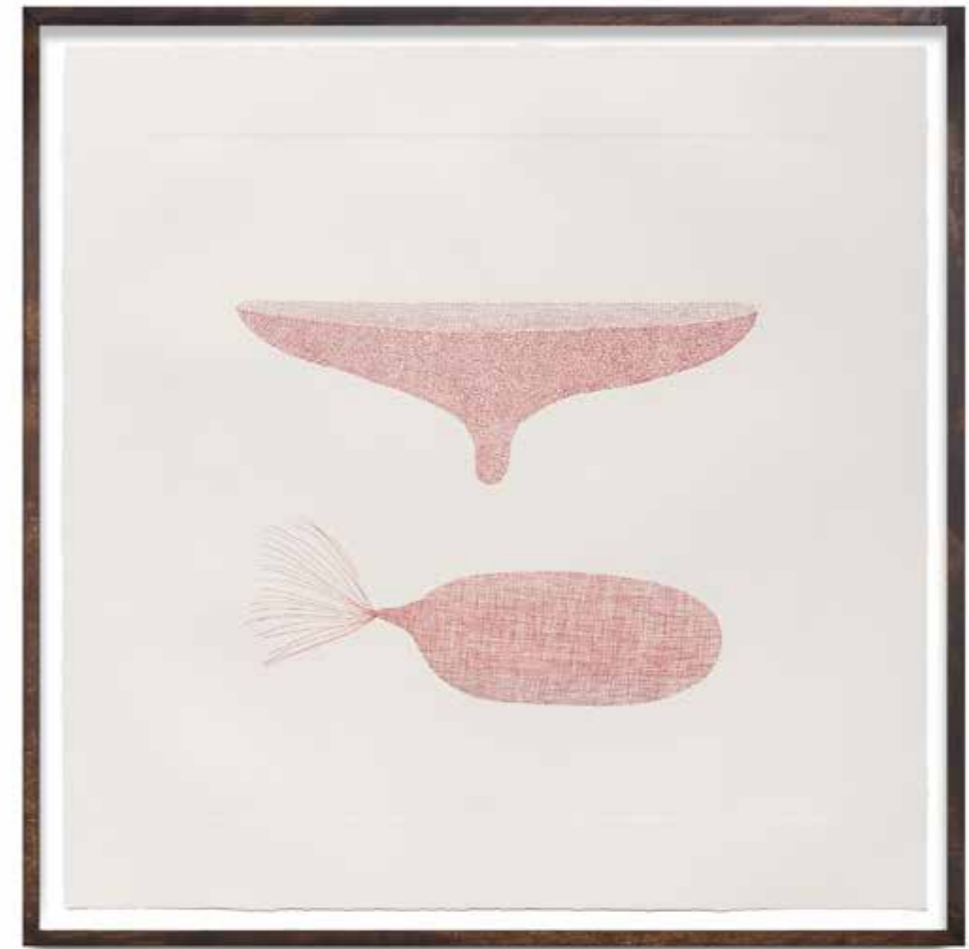
Breast Clouds I - 1
PS18-145
2018
Etching and monoprint on paper
Unique
Unframed: 30 x 39.5 cm



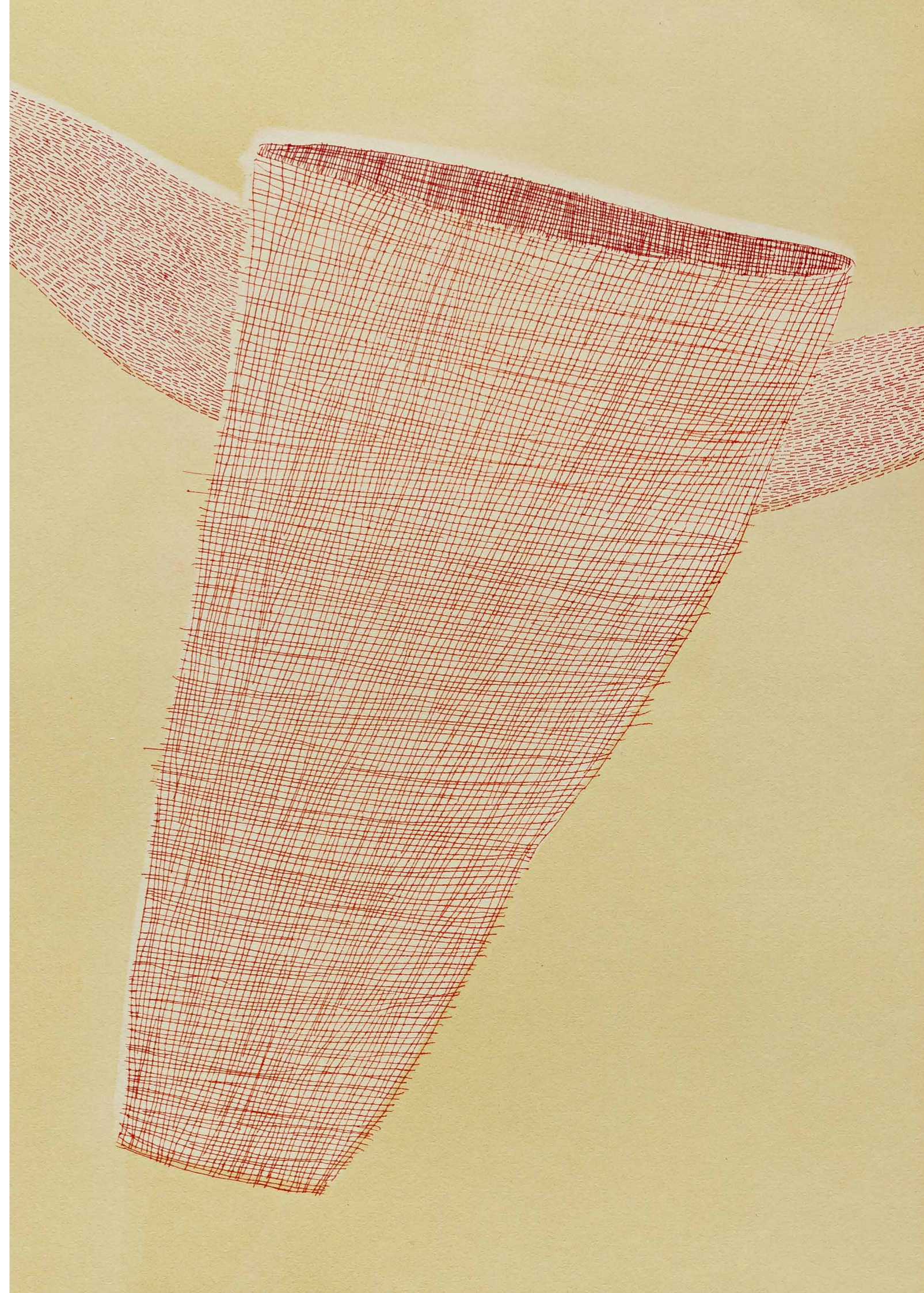
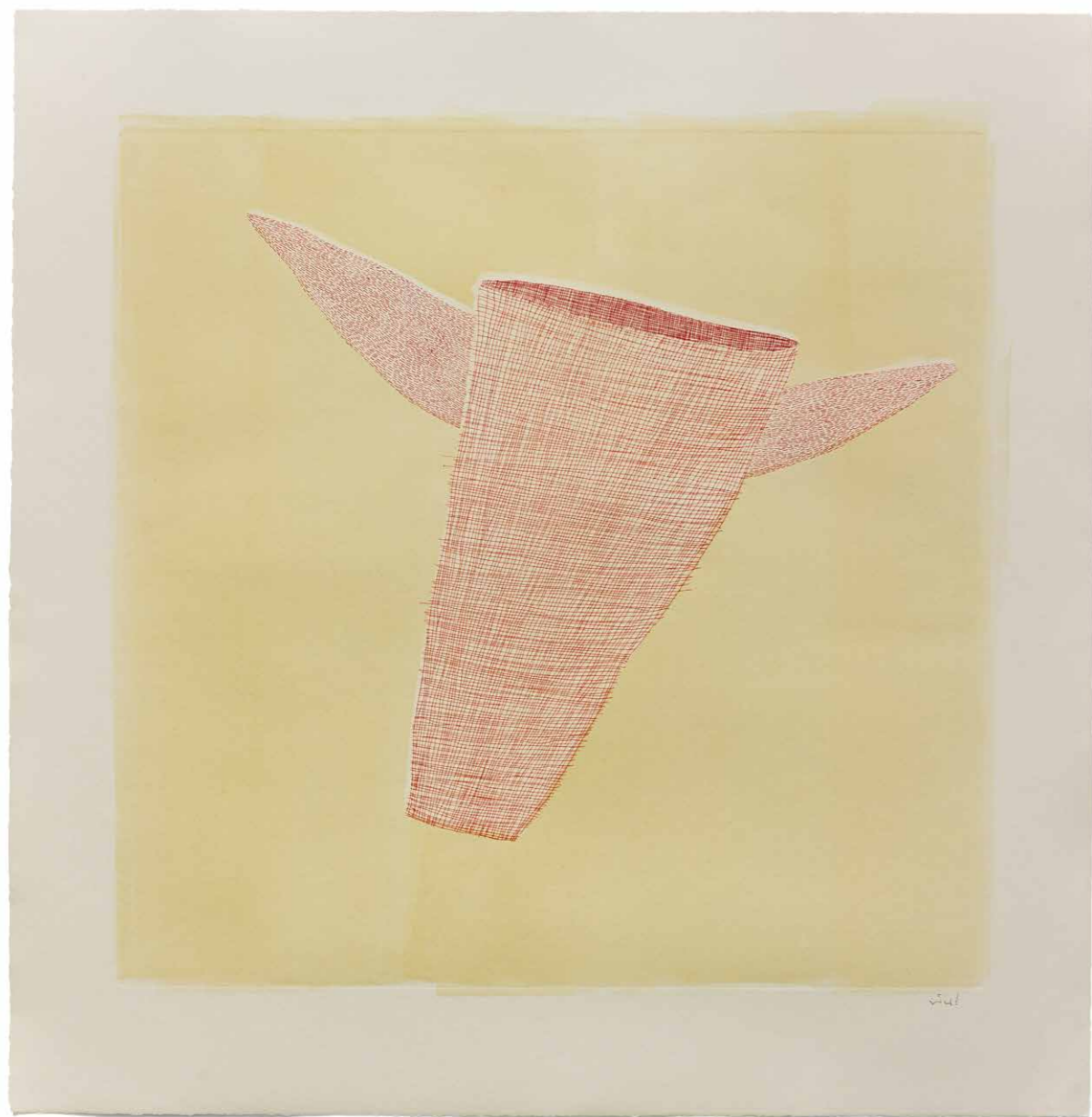
Breast Vessel II - 2
PS18-150
2018
Unique
Relief print on paper
Unframed: 32.5 x 47 cm



Breast Clouds III
PS18-164
2018
Etching on paper
Unique
Unframed: 45 x 39 cm



Breast Notes 2
PS18-177
2018
Unique
Etching on paper
Unframed: 77 x 77 cm



Flying Body 4

PS18-230

2019

Etching and monoprint on paper

Unframed: 77.5 x 76 cm

Framed: 83.5 X 82. 3.8 cm



Breast Vessels 1

PS18-191

2018

Etching and screenprint on gampi paper,
embedded in STPI handmade mulberry paper

Unique

Unframed: 55.5 X 55.5 cm

Framed: 60.5 x 60.5 x 4.5 cm



Breast Talks 14

PS18-217

2018

Gold leaves, etching and screenprint on gampi
paper embedded in STPI handmade mulberry paper

Unique

Unframed: 107.5 x 113 cm



Small white label on the wall.



About STPI

STPI is a dynamic creative workshop and contemporary art gallery based in Singapore. Established in 2002, STPI is an organisation committed to promoting artistic experimentation in the mediums of print and paper and has become one of the most cutting-edge destinations for contemporary art in Asia. STPI sits alongside National Gallery Singapore and the Singapore Art Museum as part of the national Visual Arts Cluster of leading institutions in the region.