

# Tamarind INSTITUTE

## ELLEN BERKENBLIT: IN MOTION

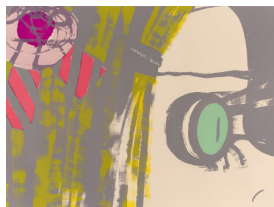
August 25-December 22, 2023



ELLEN BERKENBLIT  
*Harmonium*, 2022 (22-305)  
Two-color lithograph  
Paper Size: 25 3/16 x 18 5/8 inches  
Paper Type: Grey Rives BFK  
Collaborating Printer(s): Valpuri Remling  
and Lindsey Sigmon  
Edition of 20  
\$2,000\*



ELLEN BERKENBLIT  
*Alley of Peacocks*, 2022 (22-304)  
Ten-color lithograph  
Paper Size: 26 3/4 x 37 inches  
Paper Type: Grey Rives BFK  
Collaborating Printer(s): Valpuri Remling  
and Lindsey Sigmon  
Edition of 20  
\$3,000\*



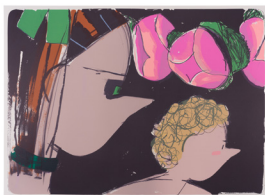
ELLEN BERKENBLIT  
*Large Stripe Ribbon*, 2021 (20-305)  
Six-color lithograph with glitter element  
Paper Size: 29 13/16 x 39 7/8 inches  
Paper Type: Antique white Somerset velvet  
Collaborating Printer(s): Valpuri Remling,  
Alyssa Ebinger and Lindsey Sigmon  
Edition of 20  
\$4,000\*



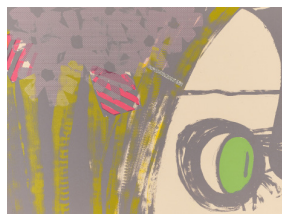
ELLEN BERKENBLIT  
*Alley of Peacocks*, 2022 (22-304a)  
One-color lithograph  
Paper Size: 26 3/4 x 37 inches  
Paper Type: Grey Rives BFK  
Collaborating Printer(s): Valpuri Remling  
and Lindsey Sigmon  
Edition of 10  
\$2,500\*



ELLEN BERKENBLIT  
*Leopard Ribbon*, 2021 (20-306)  
Five-color lithograph with glitter elements  
Paper Size: 29 13/16 x 39 7/8 inches  
Paper Type: Antique white Somerset velvet  
Collaborating Printer(s): Valpuri Remling  
and Lindsey Sigmon  
Edition of 20  
\$4,000\*



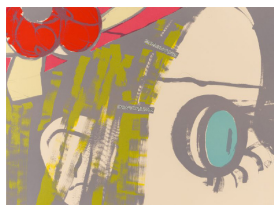
ELLEN BERKENBLIT  
*Night Peonies*, 2022 (22-303)  
Eleven-color lithograph  
Paper Size: 25 15/16 x 36 7/8 inches  
Paper Type: gray Rives BFK  
Collaborating Printer(s): Valpuri Remling  
and Lindsey Sigmon  
Edition of 20  
\$3,000\*



ELLEN BERKENBLIT  
*Daisies*, 2021 (20-307)  
Six-color lithograph with glitter elements  
Paper Size: 29 11/16 x 39 7/8 inches  
Paper Type: Antique white Somerset velvet  
Collaborating Printer(s): Valpuri Remling,  
Alyssa Ebinger and Lindsey Sigmon  
Edition of 20  
\$4,000\*



ELLEN BERKENBLIT  
*Night Peonies*, 2022 (22-303a)  
One-color lithograph  
Paper Size: 25 15/16 x 36 7/8 inches  
Paper Type: gray Rives BFK  
Collaborating Printer(s): Valpuri Remling  
and Lindsey Sigmon  
Edition of 10  
\$2,500\*



ELLEN BERKENBLIT  
*Flower Hat*, 2021 (20-308)  
Six-color lithograph with glitter elements  
Paper Size: 29 1/2 x 39 7/8 inches  
Paper Type: Antique white Somerset velvet  
Collaborating Printer(s): Valpuri Remling,  
Alyssa Ebinger and Lindsey Sigmon  
Edition of 20  
\$4,000\*



ELLEN BERKENBLIT  
*Return of Bright Brown*, 2003 (03-320)  
Six-color lithograph  
Paper Size: 19 1/2 x 25 inches  
Paper Type: German Etching Paper  
Collaborating Printer(s): Bill Lagattuta  
Edition of 24  
\$1,500\*



ELLEN BERKENBLIT  
*P. Mouse*, 2003 (03-321)  
Four-color lithograph  
Paper Size: 24 x 17 inches  
Paper Type: German Etching Paper  
Collaborating Printer(s): Lee Turner  
Edition of 15  
\$1,500\*



ELLEN BERKENBLIT  
*Laboratory on Rt. 66*, 2003 (03-319)  
Five-color lithograph  
Paper Size: 24 1/8 x 17 inches  
Paper Type: German Etching Paper  
Collaborating Printer(s): Lee Turner  
Edition of 15  
NFS

 Tamarind  
INSTITUTE

Kylee Aragon Wallis, Gallery Director  
tamarind@unm.edu  
505.277.3901

\*Price for unframed work(s). All prices subject to change.



Photo by Bryan Derballa. Copyright Juxtapoz.

*Ellen Berkenblit: In Motion* showcases a collection of lithographs made by Ellen Berkenblit at Tamarind Institute during 2003, 2020, and 2022. *In Motion* captures the essence of Berkenblit's exploration of line and movement. Through kinetic figures that act as conduits, her dynamic compositions come to life. The title itself conveys vibrant energy, fluidity, and the narrative possibilities evoked by these figures. The exhibition provides an opportunity to explore Berkenblit's artistic evolution and the development of her visual language over the course of nearly two decades.

Berkenblit received her BFA from Cooper Union in 1980. She was a Guggenheim fellow in 2014. In 2019 she created *Leopard's Lane*, a site-specific mural for the MCA Chicago's Atrium Project. Recent solo exhibitions include the Drawing Center, New York; Rodolphe Janssen, Brussels; Anton Kern Gallery, New York; and Vielmetter, Los Angeles. Her work is in the permanent collections of the Brooklyn Museum; Museum of Contemporary Art, Chicago; Museum of Contemporary Art, Los Angeles; Museum of Modern Art, New York; and Whitney Museum of American Art, New York, among others.

Berkenblit is represented by Anton Kern Gallery in New York, Vielmetter in Los Angeles, Corbett vs Dempsey in Chicago, and Contemporary Fine Arts in Berlin.