

# Marlborough

## Alex Katz: Portraits

March 12 – May 8, 2021  
545 West 25<sup>th</sup> Street

1



*Ada Four Times #1*, 1979–80  
Silkscreen and lithograph in ten colors on  
Arches Cover White paper, ed. of 120  
30 x 22 1/2 in. / 76.2 x 57.2 cm  
Catalogue Raisonné no. 118  
GNN4775

2



*Ada Four Times #4*, 1979–80  
Silkscreen and lithograph in ten colors on  
Arches Cover White paper, ed. of 120  
30 x 22 1/2 in. / 76.2 x 57.2 cm  
Catalogue Raisonné no. 121  
GNN4778

3



*Ada Four Times #3*, 1979–80  
Silkscreen and lithograph in ten colors on  
Arches Cover White paper, ed. of 120  
30 x 22 1/2 in. / 76.2 x 57.2 cm  
Catalogue Raisonné no. 120  
GNN4777

4



*Ada Four Times #2*, 1979–80  
Silkscreen and lithograph in ten colors on  
Arches Cover White paper, ed. of 120  
30 x 22 1/2 in. / 76.2 x 57.2 cm  
Catalogue Raisonné no. 119  
GNN4776

5



*Night: William Dunas Dancers No. 1*, 1983  
Color lithograph on Arches Cover paper, ed. of  
100  
25 x 31 1/4 in. / 63.5 x 79.4 cm  
Catalogue Raisonné no. 157  
GNN4932

6



*Night: William Dunas Dancers No. 2*, 1983  
Color lithograph on Arches Cover paper, ed. of  
100  
25 x 31 1/4 in. / 63.5 x 79.4 cm  
Catalogue Raisonné no. 158  
GNN4933

# Marlborough

7



*Night: William Dunas Dancers No. 3, 1983*  
Color lithograph on Arches Cover paper, ed. of 100  
25 x 31 1/4 in. / 63.5 x 79.4 cm  
Catalogue Raisonné no. 159  
GNN4934

8



*Night: William Dunas Dancers No. 4, 1983*  
Edition of 100  
Color lithograph on Arches Cover paper  
25 x 31 1/4 in. / 63.5 x 79.4 cm  
Catalogue Raisonné no. 160  
GNN4935

9



*Brisk Day III, 1990*  
Color woodcut on Somerset paper, ed. of 150  
36 1/4 x 29 1/2 in. / 92.1 x 74.9 cm  
Catalogue Raisonné no. 237  
GNN6063

10



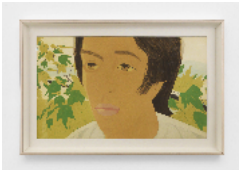
*Brisk Day I, 1990*  
Color aquatint, ed. of 150  
36 1/4 x 29 1/2 in. / 92.1 x 74.9 cm  
Catalogue Raisonné no. 238  
GNN6061

11



*Brisk Day II, 1990*  
Color silkscreen on Somerset paper, ed. of 150  
36 1/4 x 29 1/2 in. / 92.1 x 74.9 cm  
Catalogue Raisonné no. 239  
GNN6062

12



*Boy with Branch I, 1975*  
Aquatint in seven colors on Arches Cover White paper, ed. of 90  
24 1/4 x 40 1/4 in. / 102.9 x 61.6 cm  
Catalogue Raisonné no. 79  
GNN10625

# Marlborough

13



*Blue Coat*, 1993

Aquatint in six colors on Somerset Satin paper,  
H.C. ed. of 1

plate: 23 7/8 x 11 7/8 in. / 60.6 x 30.2 cm

sheet: 37 x 24 in. 93.9 x 60.9 cm

Catalogue Raisonné no. 280

GNN11652

14



*June Ekman's Class: June*, 1972

Etching and aquatint on Arches paper, ed. of 50

plate: 5 x 8 7/8 in. / 12.7 x 22.5 cm

sheet: 11 1/8 x 15 in. / 28.3 x 38.1 cm

Catalogue Raisonné no. 45

GNN4359

15



*June Ekman's Class: Judy*, 1972

Etching and aquatint on Arches paper, ed. of 50

plate: 5 1/2 x 8 7/8 in. / 13.9 x 22.5 cm

sheet: 11 1/8 x 15 in. / 28.3 x 38.1 cm

Catalogue Raisonné no. 47

GNN4365

16



*June Ekman's Class: Harmony*, 1972

Etching and aquatint on Arches paper, ed. of 50

plate: 5 x 9 in. / 12.7 x 22.9 cm

sheet: 11 1/8 x 15 in. / 28.3 x 38.1 cm

Catalogue Raisonné no. 46

GNN4369

17



*June Ekman's Class: Naomi*, 1972

Etching and aquatint on Arches paper, ed. of 50

plate: 5 1/8 x 8 3/4 in. / 13.0 x 22.2 cm

sheet: 11 1/8 x 15 in. / 28.3 x 38.1 cm

Catalogue Raisonné no. 48

GNN4360

18



*June Ekman's Class: Timmie*, 1972

Etching and aquatint on Arches paper, ed. of 50

plate: 5 x 8 7/8 in. / 12.7 x 22.5 cm

sheet: 11 1/8 x 15 in. / 28.3 x 38.1 cm

Catalogue Raisonné no. 51

GNN4366

19



*June Ekman's Class: Nancy*, 1972

Etching and aquatint on Arches paper, ed. of 50

plate: 5 7/8 x 8 7/8 in. / 14.9 x 22.5 cm

sheet: 11 1/8 x 15 in. / 28.3 x 38.1 cm

Catalogue Raisonné no. 49

GNN4364

# Marlborough

20



*June Ekman's Class: Yvonne, 1972*  
Etching and aquatint on Arches paper, ed. of 50  
plate: 5 x 8 7/8 in. / 12.7 x 22.5 cm  
sheet: 11 1/8 x 15 in. / 28.3 x 38.1 cm  
Catalogue Raisonné no. 50  
GNN5321

21



*June Ekman's Class: Kasha, 1972*  
Etching and aquatint on Arches paper, ed. of 50  
plate: 5 1/8 x 8 7/8 in. / 13.0 x 22.5 cm  
sheet: 11 1/8 x 15 in. / 28.3 x 38.1 cm  
Catalogue Raisonné no. 52  
GNN4363

22



*June Ekman's Class: Fran, 1972*  
Etching and aquatint on Arches paper, ed. of 50  
plate: 5 1/8 x 8 7/8 in. / 13.0 x 22.5 cm  
sheet: 11 1/8 x 15 in. / 28.3 x 38.1 cm  
Catalogue Raisonné no. 53  
GNN4362

23



*June Ekman's Class: Roxanne, 1972*  
Etching and aquatint on Arches paper, ed. of 50  
plate: 5 1/8 x 8 7/8 in. / 13.0 x 22.5 cm  
sheet: 11 1/8 x 15 in. / 28.3 x 38.1 cm  
Catalogue Raisonné no. 55  
GNN4367

24



*June Ekman's Class: Mary, 1972*  
Etching and aquatint on Arches paper, ed. of 50  
plate: 5 x 8 7/8 in. / 12.7 x 22.5 cm  
sheet: 11 1/8 x 15 in. / 28.3 x 38.1 cm  
Catalogue Raisonné no. 54  
GNN4370

25



*June Ekman's Class: Thalia, 1972*  
Etching and aquatint on Arches paper, ed. of 50  
plate: 5 3/8 x 8 7/8 in. / 13.7 x 22.5 cm  
sheet: 11 1/8 x 15 in. / 28.3 x 38.1 cm  
Catalogue Raisonné no. 56  
GNN4368

26



*Margit Smiles, 1994*  
Aquatint in seven colors on Somerset Satin  
paper, ed. of 40  
47 1/2 x 34 1/2 in. / 120.7 x 87.6 cm  
Catalogue Raisonné no. 287  
GNN11369

# Marlborough

27



*Caroline*, 1977

Lithograph in three colors on Arches Buff paper,  
ed. of 60

27 x 21 in. / 68.6 x 53.3 cm

Catalogue Raisonné no. 92

GNN4665

28



*Grey Pamela*, 1977

Screenprint and lithograph in two colors on  
Copperplate Deluxe paper, ed. of 30

28 1/2 x 21 1/2 in. / 72.4 x 54.6 cm

Catalogue Raisonné no. 89

GNN4666

29



*Sunny*, 1974

Edition of 52

Aquatint and drypoint on German Etching paper

15 x 22 3/8 in. / 38.1 x 56.8 cm

Catalogue Raisonné no. 75

GN20211

30



*Vincent With Open Mouth*, 1974

Aquatint and drypoint on German Etching paper,  
ed. of 58

15 x 22 1/4 in. / 38.1 x 56.5 cm

Catalogue Raisonné no. 77

GNN5215

31



*Profile of Vincent*, 1974

Drypoint on German Etching paper, ed. of 62

15 x 22 in. / 38.1 x 55.9 cm

Catalogue Raisonné no. 71

GNN4502