

## Soledad Salamé: *Camouflage*

April 12- June 15, 2025



***Algae Clusters*, 2025**

Handmade paper with jeans pulp, chine-collé,  
watercolors, gouache, and drawing  
Paper: 41 x 33 inches  
Frame: 45.75 x 38.25 inches

**SOLD** - Collection



***Ocean*, 2024**

Bio plastics, bio algae, crochet, pigments, turmeric,  
indigo, spirulina  
48 x 16 x 16 inches

Price on Request



***Rainforest*, 2025**

Pineapple husks, fabric, thread  
25 x 16 x 10 inches  
Collection of Amy Eva Raehse, MD

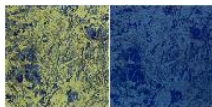
Not for Sale - Collection



***Fast Fashion Atacama I, II, III, IV*, 2025**

Archival print on canvas with hand embroidery  
Comprised of 4 panels, each 59 x 38 inches  
Installed: 59 x 152 inches  
AP Variable Edition of 5  
Panel II collection of Sue Payne, TX

Price on Request



***Blue and Yellow Algae*, 2025**

Silkscreen on Rives BFK paper  
Paper: 19 x 38 inches, 19 x 19 inches each  
Frame: 22.63 x 41.38 inches  
AP Edition 2 of 10

Price on Request



***Fast Fashion*, 2025**

Single-channel video in color, no sound  
4 minutes 11 seconds, looped  
This video exposes northern Chile's ecological disaster in the Atacama Desert, documenting the environmental waste associated with "Fast Fashion." Salamé captures mountains of waste through use of drone and handheld cameras, drawing attention to the catastrophic effects of this crisis. In a second video, Salamé shows the efforts that progressive recyclers are taking to help reduce waste by turning discarded fibrous materials into reusable yarns.

Not for Sale



***A Mountain of Clothes in Blue*, 2024**

Silkscreen on handmade paper, interference pigments  
Paper: 24 x 28 inches  
Frame: 27.5 x 31.25 inches  
PP Edition 1 of 1

Price on Request



***In the Ocean I, 2025***

Silkscreen on handmade paper, jeans pulp  
Paper: 13.75 x 18 inches  
Frame: 17.5 x 22.38 inches  
Edition 1 of 1

**SOLD** - Collection



***In the Ocean II, 2025***

Silkscreen on handmade paper, jeans pulp  
Paper: 11 x 15 inches  
Frame: 14.5 x 19.25 inches  
Edition 1 of 1

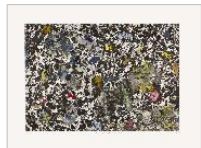
**SOLD** - Collection



***Fast Fashion in Black & Brown, 2023***

Solar Etching, chine collé with hand coloring  
Paper: 22 x 30 inches  
Frame: 28.75 x 34.25 inches  
AP Edition 1 of 1

Price on Request



***Fast Fashion in Color I, 2022***

Solar Etching, chine collé with hand coloring  
Paper: 22 x 30 inches  
Frame: 28.75 x 34.25 inches  
AP Edition 1 of 1

**SOLD** - Collection



***Camouflage, 2024***

Solar etching, silkscreen, chine collé, hand painting  
with 3D elements  
Comprised of 12 panels, 22 x 30 inches each  
Installed: 66 x 120 inches

Price on Request



***Atacama in Grey, 2024***

Silkscreen, relief printing, gilded palladium leaf  
Paper: 22 x 30 inches  
Frame: 28.75 x 36.38 inches

AP Ed. 1 of 6:  
Price on Request

**SOLD** - AP Ed. 5 of 6



***Desert, 2024***

Handmade flax paper, clay, pelon  
48 x 16 x 16 inches

Price on Request



***Atacama in Red, 2017***

Printing, laser cutting, embossing, embroidery  
Paper: 30 x 40 inches  
Frame: 34 x 44 inches  
Edition 2 of 5

**SOLD** - Collection

Collection of SAMEK Art Museum, Bucknell University, PA