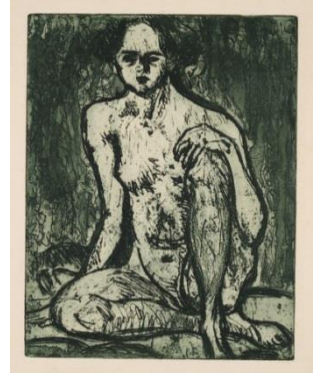


**1. Ernst Ludwig Kirchner**  
**Sitzender Mädchenakt (Sitting Nude Girl)**

Etching in dark green, 1907. Dube R 17 b  
 On chamois copperplate printing paper. One of 8 so far known copies pulled by the artist.  
 22,8 x 17,7 on 30,3 x 24 cm.  
 With the stamp of Walter Kirchner from 1. 3. 47. As well as with the numbering 264 on the verso.

Provenance: Estate of the artist.

Item Id: 67963



**2. Ernst Ludwig Kirchner**  
**Brustbild eines liegenden Aktes (Dodo)**  
**(Portrait of a Reclining Nude (Dodo))**

Woodcut, 1911. Dube H 177 I  
 On strong copperplate printing paper, mounted on a cardboard by the artist. One of 6 so far known copies pulled by the artist.  
 With the Schiefler number "167" in ink on the cardboard.  
 29,5 x 18,9 on 33,6 x 23,4 cm.  
 With the estate stamp and with the numberings "H 167 I" in ink and "K 5810" in pencil on the verso.

Provenance: Estate of the artist.

Item Id: 67537



**3. Ernst Ludwig Kirchner**  
**Liegender Akt (Reclining Nude)**

Woodcut, 1911. Dube H 184

On Japan handmade paper. One of only 2 so far known copies pulled by the artist. Signed on the lower right, marked with "Handdruck" (Handprint).





20 x 27,8 on 35,5 x 44 cm.

With the estate-stamp as well as with the numberings "H 168 II" in ink, "K 10014", "9696" and "35665" in pencil and with the stamp "Unverkäuflich E L Kirchner" (Unsaleable E L Kirchner) on the verso.

Provenance: Estate of the artist.

Item Id: 80156



<p><b>4. Ernst Ludwig Kirchner</b>  <b>Nackte Frau an der Quelle (Naked Woman at the Source)</b></p> <p>Etching, 1920. Dube R 290 II        On chamois copperplate printing paper. One of 3 so far known copies pulled by the artist.        25,2 x 20 on 30 x 24,2 cm.        With the estate stamp as well as with the numberings "R 253 II", "K 9068" and "C 4469" in ink and pencil on the verso.</p> <p>Provenance: Estate of the artist.</p> <p>Item Id: 79280</p>	
<p><b>5. Ernst Ludwig Kirchner</b>  <b>Zwei badende Frauen (Two Bathing Women)</b></p> <p>Woodcut, 1922. Dube H 482 II        On chamois copperplate printing paper. One of 7 so far known copies pulled by the artist.        23 x 16,7 on 27 x 21 cm. With the estate stamp as well as with the numberings "H 479 II", "K 5752", "5383" and "1421" in pencil on the verso.</p> <p>Provenance: Estate of the artist.</p> <p>Item Id: 66898</p>	
<p><b>6. Ernst Ludwig Kirchner</b>  <b>Im Palast der Prinzessinnen (In the Palace of Princesses)</b></p> <p>Woodcut, 1922. Dube H 486 II        One of 3 so far known copies pulled by the artist.        On yellow Japan paper.        15 x 17 on 44,5 x 34 cm.        With the estate stamp as well as with the numberings "H 474 III D" in ink, "K 5537", "C 4903" in pencil on the verso.</p> <p>Provenance: Estate of the artist.</p> <p>Item Id: 66805</p>	
<p><b>7. Ernst Ludwig Kirchner</b>  <b>Badende im Waldbach (Bathers in Pound)</b></p> <p>Etching (on copper), 1923. Dube R 471 I        On strong satined paper. One of 8 so far known copies pulled by the artist.        25 x 31 on 34,5 x 48,5 cm.        With the estate stamp as well as with the numberings R 446 I", "K10442" and "9008" in pencil on the verso.</p> <p>Provenance: Estate of the artist.</p> <p>Item Id: 66795</p>	

**8. Ernst Ludwig Kirchner  
 Zwei Badende (Two Bathing Woman)**

Etching (on copper), 1924. Dube R 481 III  
 One of 3 so far known copies pulled by the artist.  
 On strong satined paper.  
 30 x 25 on 37 x 30,5 cm.  
 With the estate stamp as well as with the numberings "R 474 II", "C 4342" and "K 9314" in ink and pencil and "8971" and "284/81" in pencil on the verso.

Provenance: Estate of the artist.

Item Id: 66801

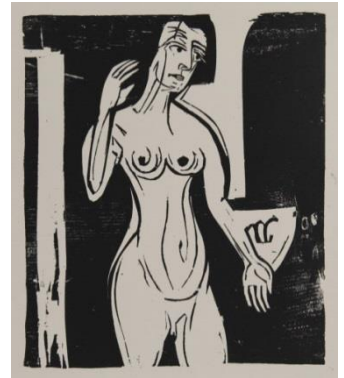


**9. Ernst Ludwig Kirchner  
 Badende (Bathing Woman)**

Woodcut, 1927. Dube H 585 III  
 On chamois imitated Japan paper. One of 5 so far known copies pulled by the artist.  
 29,3 x 25 on 42 x 33,5 cm.  
 With the estate stamp as well as with the numbering "H 564 IV" on the verso.

Provenance: Estate of the artist.

Item Id: 66880



**10. Ernst Ludwig Kirchner  
 Badeanstalt (Public Baths)**

Woodcut, 1936. Dube H 665 II  
 On imitated Japan paper. One of 4 so far known copies pulled by the artist.  
 50 x 37 on 58,8 x 41,3 cm.  
 With the estate stamp as well as with the numberings "H Da/Bf 8 II D" in ink and "K 5459", "C 3513" in pencil on the verso.

Provenance: Estate of the artist.

Item Id: 67236

